



**FREE
AIRFARE**
**+\$300
OFF** PER
PERSON
WHEN BOOKED BY
DECEMBER 31, 2025

Portugal and the Douro River Cruise

Depart US Date: 05/05/2027 Tour Start Date: 05/06/2027 Return Date: 05/15/2027



Portugal and the Douro River Cruise



Experience the cosmopolitan charm of Lisbon, Portugal



Feel the rhythm of the city in the Plaza Mayor, Salamanca, Spain

DAY 1 Depart the USA: Depart the USA on your overnight flight to Lisbon, Portugal.

DAY 2 Lisbon, Portugal: Upon arrival, you'll be met by a representative and transferred to your hotel. The remainder of the day is at your leisure to explore Lisbon. This evening, join your Mayflower staff and fellow travelers for an included dinner.
Meal: D

DAY 3 Lisbon: After breakfast, an included tour highlights the famous sites of the city. During a panoramic coach tour, see 'Monument to the Discoveries,' and Belem Tower, a UNESCO World Heritage Site. Visit Jerónimos Monastery and discover the unique architecture and history. Enjoy a free afternoon to shop, dine and experience this cosmopolitan city on your own.
Meal: B

DAY 4 Fátima – Coimbra – Porto: Depart Lisbon by coach and journey to the ship in Porto. Enroute, visit Fátima, home to the Sanctuary of Fátima, an important Catholic pilgrimage site. The city's fame originates from the apparitions of Our Lady of the Rosary that appeared to three shepherd children in the nearby fields. Continue to Coimbra and its famous university before arriving in Porto to embark the *MS Emerald Radiance*, home for the next seven nights. **Meals: B, D**

DAY 5 Porto – Pinhão: Today is a day of sailing through the twists and turns of the Douro Valley. Designated a UNESCO World Heritage Site, this area is sparsely populated by quaint villages, sun-drenched vineyards and small farms. Later today, arrive in the village of Pinhão, perfectly situated on a river bend

surrounded by terraced hillsides that produce some of the world's best Port wine. Tonight, enjoy a welcome reception and dinner. **Meals: B, L, D**

DAY 6 Pinhão – Vega de Terrón: Begin the day with a visit to the beautiful 18th-century estate of Quinta do Tedo Vineyard with spectacular views of the Douro Valley. Learn about wine production, its importance to the culture and economy, and enjoy a tasting of the local vintage. This afternoon, the ship sails for Vega de Terrón, gateway to Spain. **Meals: B, L, D**

DAY 7 Salamanca, Spain: Today's excursion takes you to the UNESCO World Heritage Site of Salamanca, Spain. During the guided walking tour, see amazingly detailed and intricately carved buildings of the university and the House of Shells. Regal splendor abounds in the Plaza Mayor, the heartbeat of the city. You'll have free time for lunch and to explore independently before returning to the ship in Portugal.
Meals: B, D

DAY 8 Pocinho / Régua, Portugal: An early afternoon arrival brings you to Pocinho. Disembark for an included visit to the medieval town of Castelo Rodrigo. Uncover the secrets of its fortress and perhaps try some typical local products. Return to the ship for lunch and relax on deck as the ship sails through idyllic surroundings on the way to Régua. **Meals: B, L, D**

DAY 9 Régua – Lamego: From Régua, journey by coach to the marvelous baroque village of Lamego, home to the Sanctuary of Our Lady of Remedies - one of the most important pilgrimage sites in Portugal. Visit the Sanctuary perched atop



The quaint and historic town of Porto, Portugal

the hill, with its iconic 686-step granite staircase, decorated with the traditional Portuguese blue and white 'azulejos' tiles. This afternoon, experience a rural lunch at Quinta da Pacheca, one of the finest estates along the Douro River. Return to the ship in Régua after the excursion. This evening, enjoy local entertainment onboard. **Meals: B, L, D**

DAY 10 Porto: Having traversed the Douro River, the ship returns to Porto – a city with an eclectic mix of modern and ancient architecture. An included tour highlights the sights from its scenic beauty to the historic landmarks of the Castelo da Foz and Castelo do Queijo. For those who wish to see the charms of Porto on foot, the Active walk through the town will bring you closer to the vibrant daily life of the locals. The remainder of the afternoon is at leisure in Porto. **Meals: B, L, D**

DAY 11 Porto / USA: This morning, disembark the *MS Emerald Radiance* and bid a fond farewell to Portugal, filled with memories of this remarkable cruise along the 'River of Gold.' **Meal: B**

Itinerary and excursions are subject to change.

Additional excursions will be released approximately 180 days prior to departure.

CRUISE AND HOTEL ACCOMMODATIONS

Days 2 and 3 – Sheraton, Lisbon, Portugal

Days 4 through 10 – Aboard the *MS Emerald Radiance*



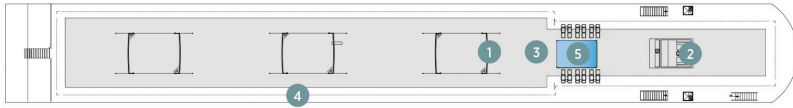
Exceptional Inclusions

- **22 Meals:** 9 breakfasts, 5 lunches and 8 dinners
- **Airport transfers** on tour dates when air is provided by tour operator
- **Visit two countries**
- Two-night **hotel stay and touring** in Lisbon, Portugal before cruising
- **Seven-night cruise** on the *Emerald Radiance*
- **First-class service** by an English-speaking crew
- **Onboard Activity Manager** will support all EmeraldACTIVE excursions and host daily onboard wellness activities, games, classes and evening entertainment
- **Shore excursions** with English-speaking **local guides**
- **All gratuities included**
- Personal **listening device** for onboard excursions
- Many meals included onboard with a **variety of international cuisine**
- Complimentary **regional wines, beer and soft drinks** accompany onboard lunches and dinners
- Complimentary **bottled water** in your stateroom
- Complimentary **WiFi onboard**
- Variety of **onboard evening entertainment**

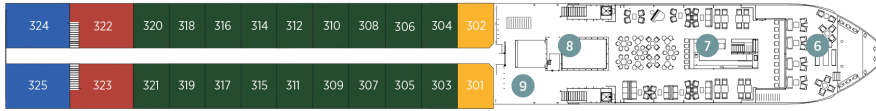
MS Emerald Radiance

Built: 2017 Speed: 15.5 mph Staterooms: 10 Suites: 46 Length: 292 ft. Crew: 37

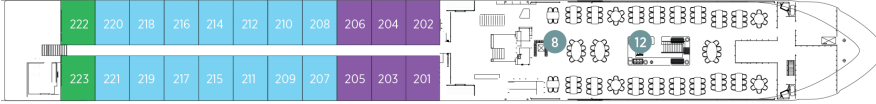
SUN DECK



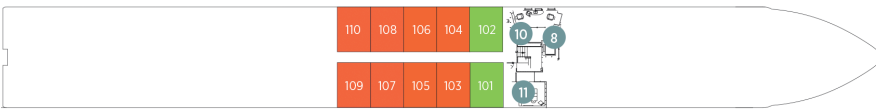
HORIZON DECK



VISTA DECK

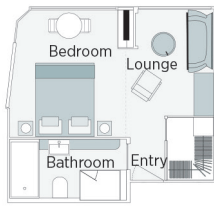


RIVIERA DECK



Public Areas and Ship Amenities

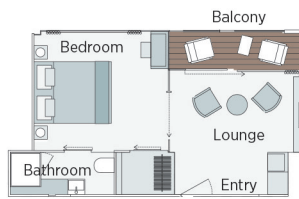
- 1 Sun Deck with Deck Chairs
- 2 Navigation Bridge
- 3 Sky Barbeque
- 4 Walking Track
- 5 Serenity Pool
- 6 The Terrace
- 7 Horizon Bar & Lounge
- 8 Elevator
- 9 Reception
- 10 Wellness Area
- 11 Fitness Area
- 12 Reflections Restaurant



Emerald Riverview Suite

300ft²

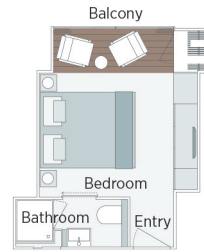
CAT RA



Owner's One-Bedroom Suite

285ft²

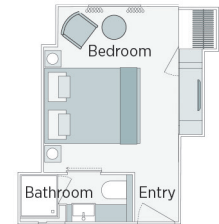
CAT SA



Panorama Balcony Suite

160ft² – 180ft²

CAT B CAT C CAT R CAT A CAT P



Emerald Stateroom

153ft² – 170ft²

CAT D CAT E

Portugal and the Douro River Cruise

		MAY 5, 2027		
CAT	STATEROOM / SUITE	DECK	PER PERSON TWIN	SINGLE ROOM ADD
E	Emerald Stateroom	Riviera	\$6,639	+\$4,979
D	Emerald Stateroom	Riviera	\$6,639	+\$4,979
C	Panorama Balcony Suite	Vista	\$7,209	+\$5,407
B	Panorama Balcony Suite	Vista	\$7,209	+\$5,407
R	Panorama Balcony Suite	Vista	\$7,209	+\$5,407
A	Panorama Balcony Suite	Horizon	\$8,099	+\$6,074
P	Panorama Balcony Suite	Horizon	\$8,099	+\$6,074
SA	Owner's One-Bedroom Suite	Horizon	\$8,859	N/A
RA	Riverview Suite	Horizon	\$8,985	N/A

Pricing includes Land and Cruise, **FREE AIR** when booked during promotion.

Please note: Deposits are non-refundable and it is recommended to find a roommate before joining.



FOR RESERVATIONS OR INFORMATION CONTACT:

ALPINE ADVENTURES
GLOBAL SKI & ADVENTURE SPECIALIST

Maxine Jensen
(435) 503-0851
Max@AlpineAdventures.net