



St Clair
Senior Center

**FREE
AIRFARE
INCLUDED**
SEE BACK FOR DETAILS



Splendors of Europe River Cruise

the Netherlands • Germany • Austria • Slovakia • Hungary

Departure Date: May 1, 2026



Splendors of Europe River Cruise



Explore the lovely city of Amsterdam, the Netherlands



Grandeur and opulence are found throughout Vienna, Austria

DAY 1 Depart the USA: Depart the USA on your overnight flight to Amsterdam, the Netherlands.

DAY 2 Amsterdam, the Netherlands: Welcome to Amsterdam, a fascinating 700-year-old city of picturesque canals, world-class museums and cafés. You'll be met and transferred from the airport to your Emerald Cruises Star-Ship. After boarding, enjoy some time at leisure to explore Amsterdam. This evening join your fellow travelers for dinner onboard. **Meal: D**

DAY 3 Amsterdam – Cruising: This morning, choose to enjoy a glass-top boat tour through Amsterdam's UNESCO World Heritage canal network, OR take a guided bike tour to Waterland. Then return to the ship for your first day sailing through the Dutch countryside passing windmills and sailing through locks towards the Rhine River. **Meals: B, L, D**

EmeraldACTIVE: Guided bike tour to Waterland (instead of canal cruise)

DAY 4 Cologne, Germany: Founded by the Romans, and one of Germany's oldest cities, Cologne is famous for its magnificent UNESCO World Heritage Gothic cathedral. Join your guide on a walking tour to discover the city and its Old Town. During your free time shop for local specialty items or continue to explore before returning to the ship. **Meals: B, L, D**

DAY 5 Rudesheim: Today's cruising is certainly a highlight as you cruise through the spectacular UNESCO World Heritage Rhine Gorge and pass the infamous Lorelei Rock. Keep your camera ready to capture the stunning vistas of castles perched atop steep vine-covered slopes. Later, in the afternoon, arrive in Rudesheim, one of Germany's most popular towns. Choose to visit Siegfried's Mechanical Music Cabinet Museum OR take an active hike to Niederwalddenkmal. This evening, enjoy local entertainment onboard. **Meals: B, L, D**

EmeraldACTIVE: Guided hike to Niederwalddenkmal (instead of included excursion to the Music Cabinet Museum)

DAY 6 Miltenberg – Wertheim: Welcome to Miltenberg, a picturesque medieval village on the Main River. During an included walking tour, see the Merchant Hall and the old town, lined with well-preserved half-timbered buildings. Alternatively, join a guided hike through the forest to Mildenburg Castle. Later, venture to the charming town of Wertheim for an exclusive glass-blowing presentation at the Glass Art Museum. **Meals: B, L, D**

EmeraldACTIVE: Guided walk to Mildenburg Castle (instead of included tour)

EmeraldPLUS: Glass-blowing presentation

DAY 7 Würzburg: Set amongst sloping, vineyard-covered hills, Würzburg is known as the 'Pearl of the Romantic Road'. The included excursion includes a tour of the town, and a visit to the Würzburg Residenz. As one of Germany's largest and most ornate baroque palaces, it is a UNESCO World Heritage Site. See the palace's unique staircase, elaborate 18th-century frescoes and the amazing 3D stuccowork, OR, choose an optional excursion to Rothenburg, available from Würzburg. This evening, enjoy local entertainment onboard. **Meals: B, L, D**

DiscoverMORE: Excursion to Rothenburg (additional expense) (instead of included tour of Würzburg)

DAY 8 Bamberg: Relax onboard this morning, cruising to Bamberg. As you explore this UNESCO World Heritage city with your guide, discover one of Europe's largest intact medieval town centers and admire hundreds of building façades richly decorated in fascinating detail and spectacular ornamentation. **Meals: B, L, D**

DAY 9 Nuremberg: Embark on a sightseeing tour of the historic city. See its architectural wonders, and gain insight into the events of WWII and the mark left on the walled city. Afterwards, enjoy free time to stroll through the medieval city center. **Meals: B, L, D**

DiscoverMORE: World War II Tour (additional expense) (instead of included tour of Nuremberg)

DAY 10 Regensburg: This morning, cruise through the final stretch of the fascinating Main-Danube Canal. Continue cruising along the Danube River to Regensburg, one of Germany's best-preserved medieval cities. On a guided walking tour, see the city's architectural highlights, including the UNESCO World Heritage Old Town, and one of the oldest bridges crossing the Danube. After the excursion, enjoy free time in this medieval city. **Meals: B, L, D**

DiscoverMORE: Sausage-making workshop (additional expense)

EmeraldPLUS: Traditional Bavarian Band onboard

DAY 11 Passau – Linz, Austria: Cobblestone streets and graceful arcades welcome you in Passau. On an included walking tour, stroll through the old town's narrow alleys and see the Gothic Town Hall, Bishop's Residence and St. Stephen's Cathedral, a wonderful example of Baroque architecture and home to Europe's largest pipe organ. **Meals: B, L, D**

DiscoverMORE: Tour to Salzburg (additional expense)

DiscoverMORE: Tour to Český Krumlov (additional expense)

Note: all excursions overlap; only one can be selected: Passau, Salzburg or Český Krumlov

DAY 12 Melk – Dürnstein: Situated within Austria's wine-growing region, Melk is home to an imposing 900-year-old Benedictine Abbey. This UNESCO World Heritage Site is visited on the included excursion. This afternoon, the ship sails through the spectacular Wachau Valley to the enchanting village of Dürnstein.

Meals: B, L, D

EmeraldACTIVE*: Guided bike tour from Melk to Dürnstein

EmeraldACTIVE*: Guided hike to Dürnstein Castle

* the ACTIVE events operate simultaneously; only one can be selected

DAY 13 Vienna: Discover Austria's capital with a panoramic overview of the city followed by a walking tour. See the magnificent Ringstrasse, Opera House, Burgtheatre and the Parliament before enjoying time to explore at your leisure. **Meals: B, L, D**

EmeraldACTIVE: Guided bike tour of Vienna (instead of included city tour)

DiscoverMORE: Visit to Schönbrunn Palace (additional expense)

DiscoverMORE: Exclusive Viennese concert (additional expense)

DAY 14 Bratislava, Slovakia: As the capital, Bratislava is a place where Baroque palaces, boutiques and cafés adorn cobblestone streets. Enjoy a walking tour including the enchanting Old City with its Town Hall, Episcopal Summer Palace and Slovak National Theater. This afternoon, a highlight will be a cultural visit with a local family. **Meals: B, L, D**

EmeraldACTIVE: Guided hike to Bratislava Castle

(instead of included tour)

EmeraldPLUS: Home-hosted coffee and cake with Slovaks

DiscoverMORE: Carpathian Wine Route (additional expense)

DAY 15 Budapest, Hungary: Enjoy a guided tour of this capital city and see the highlights including the Hungarian Parliament Building, Andrássy Avenue and the amazing architecture of the city. The remainder of the afternoon is at leisure for you to continue discovering this beautiful city. Enjoy a traditional Hungarian farewell dinner and a folklore show on your final evening onboard.

Meals: B, L, D

EmeraldACTIVE: Guided hike to Gellert Hill (instead of included tour)

DiscoverMORE*: Excursion to Szentendre (additional expense)

DiscoverMORE*: Jewish Heritage Tour (additional expense)

EmeraldPLUS: Traditional Hungarian folklore show onboard

* DiscoverMORE's operate simultaneously; only one can be selected



Exceptional Inclusions

- **41 Meals:** 14 breakfasts, 13 lunches, 14 dinners
- **Airport transfers** on tour dates when air is provided by Mayflower Cruises & Tours
- **Visit five countries**
- **Fourteen-night cruise** aboard a luxurious Emerald Cruises Star-Ship
- **First-class service** by an English-speaking crew
- **Shore excursions** with English-speaking **local guides**
- **Personal listening device** for excursions
- All meals included onboard with a **variety of international cuisine**
- Complimentary **regional wines, beer and soft drinks** accompany onboard lunches and dinners
- **Onboard Activity Manager** will support all EmeraldACTIVE excursions and host daily onboard wellness activities, games, classes and evening entertainment
- **All gratuities included**
- Complimentary **bottled water** in your stateroom
- Complimentary **WiFi onboard**
- Complimentary **bicycles onboard** for use ashore

DAY 16 Return to USA: After breakfast, it is time to disembark the ship for your transfer to the airport, taking with you memories of your adventures from this cruise along the Rhine, Main and Danube Rivers. **Meal: B**

Itinerary is subject to change.

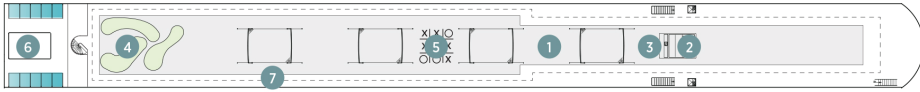
CRUISE ACCOMMODATIONS

Days 2 through 15 – Aboard an Emerald Cruises Star-Ship

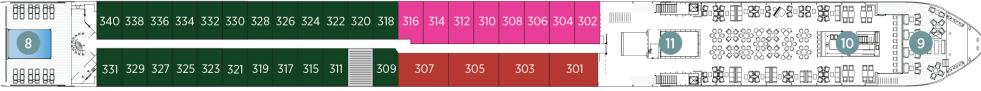
Emerald Cruises Star-Ships

Built: 2014-20 **Speed:** 15.5 mph **Staterooms:** 19 **Suites:** 72 **Length:** 443 ft. **Crew:** 47

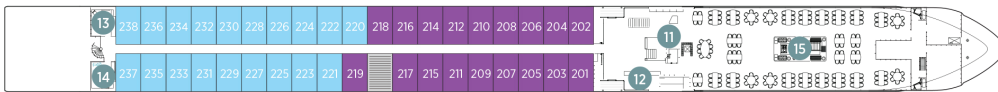
SUN DECK



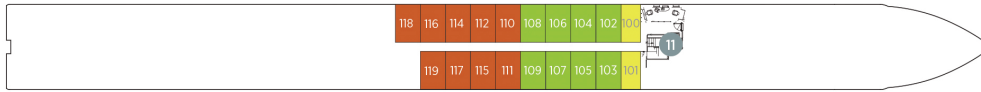
HORIZON DECK



VISTA DECK

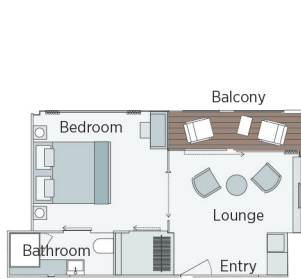


RIVIERA DECK



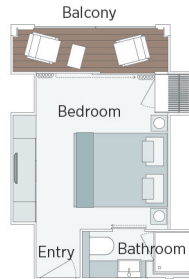
Public Areas and Ship Amenities

- 1 Sun Deck with Deck Chairs
- 2 Navigation Bridge
- 3 Sky Barbeque
- 4 Golf Putting Green
- 5 Games Area
- 6 Retractable Glass Roof
- 7 Walking Track
- 8 Daytime Pool / Evening Cinema
- 9 The Terrace
- 10 Horizon Bar and Lounge
- 11 Elevator
- 12 Reception
- 13 Wellness Area
- 14 Fitness Area
- 15 Reflections Restaurant



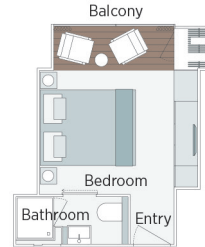
Owner's One-Bedroom Suite
315ft²

CAT SA



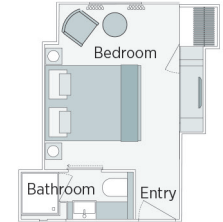
Grand Balcony Suite
210ft²

CAT S



Panorama Balcony Suite
180ft²

CAT A CAT B CAT C



Emerald Stateroom
162ft²

CAT D CAT E

Splendors of Europe River Cruise

		MAY 1, 2026		
CAT	STATEROOM / SUITE	DECK		
			PER PERSON TWIN	
			SINGLE ROOM ADD	
E	Emerald Stateroom	Riviera	\$6,170	+ \$6,095
D	Emerald Stateroom	Riviera	\$6,820	+ \$6,745
C	Panorama Balcony Suite	Vista	\$8,170	+ \$8,095
B	Panorama Balcony Suite	Vista	\$8,520	+ \$8,445
A	Panorama Balcony Suite	Horizon	\$8,820	+ \$8,745
S	Grand Balcony Suite	Horizon	\$10,870	N/A
SA	Owner's One-Bedroom Suite	Horizon	\$12,820	N/A

Prices include roundtrip air from Nashville, when booked by December 31st 2025 and roundtrip airport transfers to/from the center and Nashville Airport.
(after December 31st, call for air pricing)

Air itineraries may not be available until documents are received. Air seats are assigned by the airline for the entire group and may not be available until airport check-in. Seat changes can only be attempted at the airport and may not be possible. If specific seat assignments are vital to your reservation, we recommend booking air on your own rather than booking air with the group.



Travelers Protection Plan (TPP) for River Cruises - \$569 per person

This nonrefundable fee will provide a refund to you during the instance that you have to cancel your trip. The cancellation has to be for a covered reason (see Plan for details on coverage) and we have to be notified at least one day prior to departure. If you must leave the tour early due to personal illness or the illness or death of an immediate family member, TPP will provide a refund for any unused services after the departure of the tour. Other benefits include medical expenses for illness and injury, emergency transportation, 24 hour hot line and lost or stolen baggage assistance. Return air transportation is included ONLY if your air tickets are purchased through Mayflower Cruises & Tours. Please review the Plan for details on coverage. Should you choose not to purchase our TPP, the following per person cancellation charges will be assessed for all tours and optional excursion costs:

- 91 days or more prior to departure: Deposit Amount
- 90 days to day of departure: 100% of total tour
- No refund on unused portions of the tour

Exclusions: Mayflower Cruises & Tours reserves the right to alter its Refund and Cancellation Policy when a substantial amount of cancellation or postponement of travel is attributable to: conditions resulting from an act of God, natural or man-made disaster, fire, government action, civil disorder, war, hostilities between nations, or unavailability of transportation through no fault of Mayflower Cruises & Tours. Plan and benefits offered and administered by Trip Mate, Inc.



FOR RESERVATIONS OR INFORMATION CONTACT:

St. Clair Street Senior Center

325 St. Clair Street

P.O. Box 332369

Murfreesboro, TN 37133

615-848-2550

lblythe@murfreesborotn.gov