

Pack and Go Tours

**FREE
AIRFARE
+\$300 PER
PERSON
SAVINGS**

WHEN BOOKED BY
12/31/2025



Tulip Time on the Rhine and Golden Pass Rail Journey

the Netherlands • Germany • France • Switzerland

Tour Dates: April 11 – 23, 2027

**Mayflower**
CRUISES & TOURS
A DIVISION OF THE SCENIC GROUP

Tulip Time on the Rhine and Golden Pass Rail Journey



Flowers and fragrances fill Keukenhof Gardens



Enjoy seven-nights cruising the Rhine River aboard an Emerald Star-Ship

DAY 1 Depart the USA: Depart the USA on your overnight flight to Amsterdam, the Netherlands.

DAY 2 Amsterdam, the Netherlands: Welcome to Amsterdam, a fascinating 700-year-old city of picturesque canals, world class museums, and cafés. You will be met and transferred from the airport to your Emerald Cruises Star-Ship. Become acquainted with the amenities of your ship, or begin exploring the city. This evening, join your fellow travelers for dinner onboard. **Meal: D**

DAY 3 Amsterdam: This morning, depart by coach for an included visit to Keukenhof Gardens. Discover why it's called the 'Garden of Europe' as you admire gorgeous flowers at the peak of tulip season. Colorful displays of tulips, hyacinths, orchids and other flowers stretch as far as the eye can see as you stroll along the perfectly manicured meandering paths. Return to the ship for your first day cruising through the Dutch countryside, passing windmills and sailing through locks towards the Rhine River. Tonight, enjoy a welcome reception and gala dinner. **Meals: B, L, D**

DAY 4 Düsseldorf – Cologne: This morning, join a walking tour of Düsseldorf, a vibrant city renowned for its stylish boutiques and charming Old Town. Stroll along the picturesque Rhine River, admire the stunning architecture, and discover hidden gems off the beaten path. Later this day we will arrive in Cologne, famous for its Gothic Cathedral. This afternoon you can immerse yourself in the city's lively atmosphere, indulge in delicious local cuisine, and experience the unique charm of the city. **Meals: B, L, D**

DAY 5 Koblenz: Begin the day sailing through the spectacular UNESCO World Heritage Rhine Gorge. Pass countless medieval castles and vineyards lining the shores of this section of the river, with photo opportunities around every bend. See the infamous Lorelei statue and Pfalzgrafenstein Castle, built on an island in the middle of the river as a medieval toll station. Continue cruising to the 2000-year-old town of Koblenz, situated at the confluence of the Rhine and Moselle Rivers. Enjoy a walking tour of Koblenz seeing the German Corner where the 2 rivers meet and the Church of Our Lady. **Meals: B, L, D**

DAY 6 Mannheim – Schwetzingen: Relax onboard as the vessel cruises along the Rhine River to Ludwigshafen. Upon arrival travel by coach to visit Schwetzingen Palace, famous for the beauty and harmony of its gardens. Visit the interior of the palace, along with the beautiful gardens, maintained in their original design. Today they remain a cultural heritage site of European significance, and contain more than 100 sculptures scattered throughout the grounds. Alternatively, embark on an active journey to the quaint wellness town of Bad-Dürkheim for a hike through the beautiful vineyards. **Meals: B, L, D**

DAY 7 Kehl / Strasbourg, France: Once docked in Kehl, travel by coach across the river to Strasbourg, the capital of the Alsace region in France. Your guided walking tour includes the Grande Île - the historical city center and UNESCO World Heritage Site. Known for its medieval black and white timber framed buildings, old tanning houses, baroque sandstone buildings, canals and river locks, the city's star attraction is the cathedral, dominating the main square. This evening, local entertainment is performed onboard. **Meals: B, L, D**

DAY 8 Breisach, Germany / Freiburg: On today's adventure, visit the city of Freiburg, considered the 'capital of the Black Forest'. Aside from seeing the lovely sights, sample true Black Forest delicacies from the lively market in the city center near the main cathedral. Alternatively, join a guided bike tour in Breisach. **Meals: B, L, D**

DAY 9 Huningue – Lausanne, Switzerland: After breakfast, disembark the ship in Huningue and be transferred by coach to the beautiful city of Lausanne. The remainder of the day is at leisure to begin exploring your new surroundings. Enjoy an included dinner this evening at the hotel. **Meals: B, D**

DAY 10 Lausanne: Begin the day with a panoramic tour of the city, known around the world for its spectacular setting, and home of the International Olympic Committee and Museum. This afternoon, visit Château de Chillon, one of Europe's best-preserved medieval castles, on the shores of Lake Geneva. Surrounded by



Charming scenes abound in Strasbourg, France

brehtaking scenery, discover the history of this 13th-century fortress. Learn about the château's association with famous authors and artists; the counts and dukes who inhabited it as well as the prisoners who occupied the jail; see period furnishings, art treasures and frescoes. The beauty of the area continues to amaze during a cruise on Lake Geneva from the harbor in Montreux. Relax onboard as the spectacular scenery unfolds while sailing back to Lausanne before returning to the hotel.

Meal: B

DAY 11 Lausanne / Golden Pass: Today may be a highlight of your time in Switzerland as you experience a unique rail journey and mountain adventure. Depart by coach to Montreux where it's 'all aboard' the Golden Pass for an unforgettable panoramic train ride through the scenic landscapes of the Alps. Disembark the train in Gstaad where the coach is waiting to take you to Col du Pillon for the Glacier 3000 mountain adventure. Ascend via Aerial cable car to an altitude of approximately 9850' above sea level where you are met with astounding panoramic views, including the Matterhorn and Jungfrau. Walk across the world's first suspension bridge connecting two mountain summits, if you dare! Return to the hotel in Lausanne this afternoon. **Meal: B**

DAY 12 Lausanne: The day is left free of planned activities for your independent exploration. If you prefer, join an optional excursion to visit the village of Gruyère (famous for cheese-making) and Maison Cailler Chocolate Factory. **Meal: B**

DAY 13 Lausanne / USA: After breakfast, you will be transferred from Lausanne to the Geneva airport for your flight home. **Meal: B**

Itinerary is subject to change.

CRUISE AND HOTEL ACCOMMODATIONS

Days 2 through 8 – Aboard an Emerald Cruises Star-Ship

Days 9 through 12 – Movenpick Hotel or similar, Lausanne, Switzerland



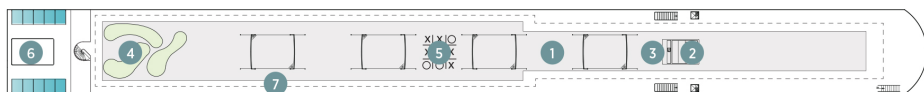
Exceptional Inclusions

- 25 Meals: 11 breakfasts, 6 lunches and 8 dinners
- **Airport transfers** on tour dates when air is provided by Mayflower Cruises & Tours
- Visit **four countries**
- **Seven-nights in a suite or stateroom** of your choice onboard the vessel
- **First-class service** by an English-speaking crew
- **All gratuities included**
- Explore the magnificent **Keukenhof Gardens**
- **Shore excursions** with English-speaking local guides
- Visit **UNESCO World Heritage Sites**
- Personal **listening device** for shore excursions
- **All meals included** onboard
- Variety of **international cuisine**
- Complimentary **regional wines, beer and soft drinks** with onboard lunches and dinners
- **Onboard Activity Manager** will support all EmeraldACTIVE excursions and host daily onboard wellness activities, games, classes and evening entertainment
- Complimentary **bottled water** in your stateroom
- Complimentary **WiFi onboard**
- Complimentary **bicycles onboard** for use ashore
- **All port charges included**
- Four-night hotel stay and touring in Lausanne
- Visit to **Château de Chillon** on Lake Geneva
- **Cruise on Lake Geneva**
- Scenic journey aboard the **Golden Pass Railway**
- **Glacier 3000** Mountain Adventure

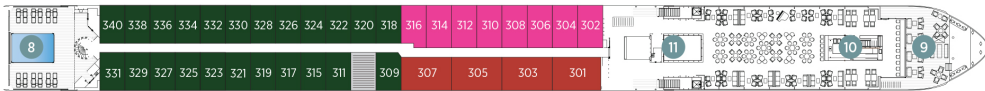
Emerald Cruises Star-Ships

Built: 2014-2026 **Speed:** 15.5 mph **Staterooms:** 19 **Suites:** 72 **Length:** 443 ft. **Crew:** 47

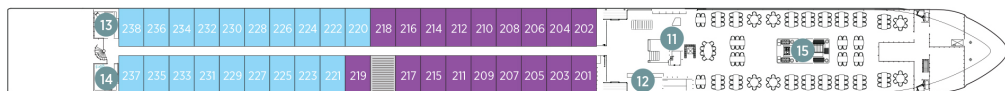
SUN DECK



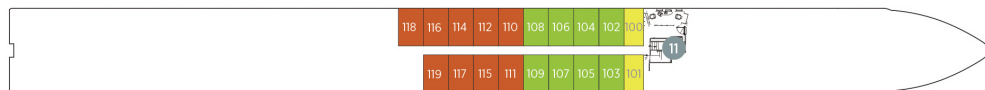
HORIZON DECK



VISTA DECK

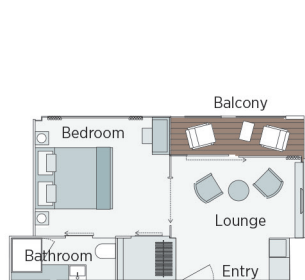


RIVIERA DECK



Public Areas and Ship Amenities

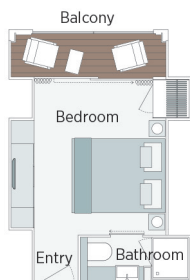
- 1 Sun Deck with Deck Chairs
- 2 Navigation Bridge
- 3 Sky Barbeque
- 4 Golf Putting Green
- 5 Games Area
- 6 Retractable Glass Roof
- 7 Walking Track
- 8 Daytime Pool / Evening Cinema
- 9 The Terrace
- 10 Horizon Bar and Lounge
- 11 Elevator
- 12 Reception
- 13 Wellness Area
- 14 Fitness Area
- 15 Reflections Restaurant



Owner's One-Bedroom Suite

315ft²

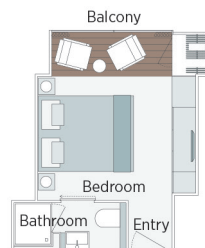
CAT SA



Grand Balcony Suite

210ft²

CAT S



Panorama Balcony Suite

180ft²

CAT A CAT B CAT C



Emerald Stateroom

162ft²

CAT D CAT E

Tulip Time on the Rhine and Golden Pass Rail Journey

CAT	STATEROOM / SUITE	DECK	APRIL 11, 2027	
			PER PERSON TWIN	SINGLE ROOM ADD
E	Emerald Stateroom	Riviera	\$6,840	\$5,130
D	Emerald Stateroom	Riviera	\$6,840	\$5,130
C	Panorama Balcony Suite	Vista	\$7,955	\$5,965
B	Panorama Balcony Suite	Vista	\$7,955	\$5,965
A	Panorama Balcony Suite	Horizon	\$8,219	\$6,165
S	Grand Balcony Suite	Horizon	\$9,029	N/A
SA	Owner's One-Bedroom Suite	Horizon	\$10,149	N/A

FREE AIR offered with **additional \$300 per person SAVINGS** when booked by 12/31/25.

Full airfare from Wichita or Lincoln = \$1,850 per person

Call for promotional details after this date.

Schedules from your city to Amsterdam, the Netherlands, returning from Geneva, Switzerland, will be available closer to departure.

Air itineraries may not be available until documents are received. Air seats are assigned by the airline for the entire group. Seat changes can only be attempted upon receipt of tickets and documents at which time availability may be limited. If specific seat assignments are vital to your reservation, we recommend individual air reservations rather than booking air with the group.

Travelers Protection Plan (TPP) for River Cruises

\$499 per person for cruise tour priced up to \$5,000

\$569 per person for cruise tour priced from \$5,001 and up

This nonrefundable fee will provide a refund to you during the instance that you have to cancel your trip. The cancellation has to be for a covered reason (see Plan for details on coverage) and we have to be notified at least one day prior to departure. If you must leave the tour early due to personal illness or the illness or death of an immediate family member, TPP will provide a refund for any unused services after the departure of the tour. Other benefits include medical expenses for illness and injury, emergency transportation, 24 hour hot line and lost or stolen baggage assistance. Return air transportation is included ONLY if your air tickets are purchased through Mayflower Cruises & Tours. Please review the Plan for details on coverage. Should you choose not to purchase our TPP, the following per person cancellation charges will be assessed for all tours and optional excursion costs:

- 121 days or more prior to departure: Deposit Amount
- 120 days to day of departure: 100% of total tour
- No refund on unused portions of the tour



Exclusions: Mayflower Cruises & Tours reserves the right to alter its Refund and Cancellation Policy when a substantial amount of cancellation or postponement of travel is attributable to: conditions resulting from an act of God, natural or man-made disaster, fire, government action, civil disorder, war, hostilities between nations, or unavailability of transportation through no fault of Mayflower Cruises & Tours. *Plan and benefits offered and administered by Trip Mate, Inc.*



FOR RESERVATIONS OR INFORMATION CONTACT:

Jayne Heller
Pack and Go Tours
785-658-7272

or

rjheller53@yahoo.com

1921 W Road Hunter, KS 67452