

**SPECIAL
SAVINGS**
WHEN BOOKED BY
APRIL 29, 2025



Portugal and the Douro River Cruise

April 29 – May 9, 2026
11 DAYS

 **Sun Tours**
Traveling the World Together

Portugal and the Douro River Cruise



Experience the cosmopolitan charm of Lisbon, Portugal



Feel the rhythm of the city in the Plaza Mayor, Salamanca, Spain

DAY 1 Depart the USA: Depart the USA on your overnight flight to Lisbon, Portugal.

DAY 2 Lisbon, Portugal: Upon arrival, you'll be met by a representative of Mayflower Cruises & Tours and transferred to your hotel. The remainder of the day is at your leisure to explore Lisbon. This evening, join your Mayflower staff and fellow travelers for an included dinner. **Meal: D**

DAY 3 Lisbon: After breakfast, an included tour highlights the famous sites of the city. During a panoramic coach tour, see 'Monument to the Discoveries,' and Belem Tower, a UNESCO World Heritage Site. Visit Jerónimos Monastery and discover the unique architecture and history. Enjoy a free afternoon to shop, dine and experience this cosmopolitan city on your own. **Meal: B**

DAY 4 Fátima – Coimbra – Porto: Depart Lisbon by coach and journey to the ship in Porto. Enroute, visit Fátima, home to the Sanctuary of Fátima, an important Catholic pilgrimage site. The city's fame originates from the apparitions of Our Lady of the Rosary that appeared to three shepherd children in the nearby fields. Continue to Coimbra and its famous university before arriving in Porto to embark the *MS Emerald Radiance*, home for the next seven nights. **Meals: B, D**

DAY 5 Porto – Pinhão: Today is a day of sailing through the twists and turns of the Douro Valley. Designated a UNESCO World Heritage Site, this area is sparsely populated by quaint villages, sun-drenched vineyards and small farms. Later today, arrive in the village of Pinhão, perfectly situated on a river bend surrounded by terraced hillsides that produce some of the world's best Port wine. Tonight, enjoy a welcome reception and dinner. **Meals: B, L, D**

EmeraldPLUS: A Portuguese cooking demonstration onboard

DAY 6 Pinhão – Vega de Terrón: Begin the day with a visit to the beautiful 18th-century estate of Quinta do Tedo Vineyard with spectacular views of the Douro Valley. Learn about wine production, its importance to the culture and economy, and enjoy a tasting of the local vintage. Alternatively, enjoy a guided walk through local vineyards OR, embark on a kayak excursion along the river. This afternoon, the ship sails for Vega de Terrón, gateway to Spain. **Meals: B, L, D**

EmeraldACTIVE*: A guided walk through the vineyards

EmeraldACTIVE*: Kayak experience in Pinhão

*The included tour and both ACTIVE tours all operate simultaneously. Only one can be selected.

DAY 7 Salamanca, Spain: Today's excursion takes you to the UNESCO World Heritage Site of Salamanca, Spain. During the guided walking tour, see amazingly detailed and intricately carved buildings of the university and the House of Shells. Regal splendor abounds in the Plaza Mayor, the heartbeat of the city. You'll have free time for lunch and to explore independently before returning to the ship in Portugal. **Meals: B, D**

EmeraldPLUS: Entertainment by a Tuna music band in Salamanca

DAY 8 Pocinho / Régua, Portugal: An early afternoon arrival brings you to Pocinho. Disembark for an included visit to the medieval town of Castelo Rodrigo. Uncover the secrets of its fortress and perhaps try some typical local products. Return to the ship for lunch and relax on deck as the ship sails through idyllic surroundings on the way to Régua. **Meals: B, L, D**

DiscoverMORE: Archaeological 4x4 Tour at Côa Museum (additional expense)

The included tour and DiscoverMORE operate at the same time.

EmeraldPLUS: Port wine cocktail lesson onboard

DAY 9 Régua – Lamego: From Régua, journey by coach to the marvelous baroque village of Lamego, home to the Sanctuary of Our Lady of Remedies - one of the most important



The quaint and historic town of Porto, Portugal

pilgrimage sites in Portugal. Visit the Sanctuary perched atop the hill, with its iconic 686-step granite staircase, decorated with the traditional Portuguese blue and white ‘azulejos’ tiles. This afternoon, experience a rural lunch at Quinta da Pacheca, one of the finest estates along the Douro River. Return to the ship in Régua after the excursion. This evening, enjoy local entertainment onboard. **Meals: B, L, D**

EmeraldACTIVE: Walk down the stairs of the Sanctuary

DiscoverMORE: Visit to Mateus Manor House (additional expense)

This tour operates at the same time as the included visit of Lamego. Only one can be selected.

EmeraldPLUS: Rural lunch at Quinta da Pacheca

EmeraldPLUS: Mosaic tile painting lesson onboard

DAY 10 Porto: Having traversed the Douro River, the ship returns to Porto – a city with an eclectic mix of modern and ancient architecture. An included tour highlights the sights from its scenic beauty to the historic landmarks of the Castelo da Foz and Castelo do Queijo. For those who wish to see the charms of Porto on foot, the Active walk through the town will bring you closer to the vibrant daily life of the locals. The remainder of the afternoon is at leisure in Porto. **Meals: B, L, D**

EmeraldACTIVE: A guided walk of Porto (instead of included tour)

DiscoverMORE*: Guided bike tour to the Atlantic Ocean (additional expense)

DiscoverMORE*: Visit to Quinta do Aveleda (additional expense)

EmeraldPLUS: Cruise through Porto’s enchanting waters

* the DiscoverMORE’s operate at the same time; only one can be selected.

DAY 11 Porto / USA: This morning, disembark the *Emerald Radiance* and bid a fond farewell to Portugal, filled with memories of this remarkable cruise along the ‘River of Gold.’ **Meal: B**

Itinerary is subject to change.



Exceptional Inclusions

- 2 pre-night stay in Lisbon, Portugal
- 7 nights on board the luxurious *MS Emerald Radiance*
- Deluxe hotel with all service charges, taxes and portorage included
- 22 Meals: 9 breakfasts, 5 lunches and 8 dinners
- Airport transfers on tour dates when air is provided by Mayflower Cruises & Tours
- Visit two countries
- First-class service by an English-speaking crew
- Onboard Activity Manager will support all EmeraldACTIVE excursions and host daily onboard wellness activities, games, classes and evening entertainment
- Shore Excursions included
- All tipping & gratuities onboard and onshore included
- Personal listening device for onboard excursions
- Many meals included onboard with a variety of international cuisine
- Complimentary regional wines, beer and soft drinks accompany onboard lunches and dinners
- Complimentary bottled water in your stateroom
- Complimentary WiFi onboard
- Variety of onboard evening entertainment

CRUISE AND HOTEL ACCOMMODATIONS

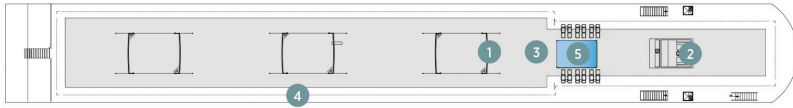
Days 2 and 3 – Avani Hotel or similar, Lisbon, Portugal

Days 4 through 10 – Aboard the *MS Emerald Radiance*

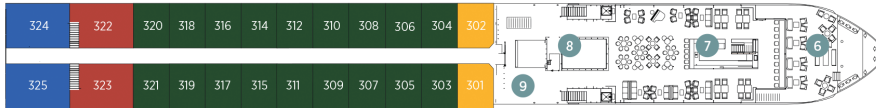
MS Emerald Radiance

Built: 2017 **Speed:** 15.5 mph **Staterooms:** 10 **Suites:** 46 **Length:** 292 ft. **Crew:** 37

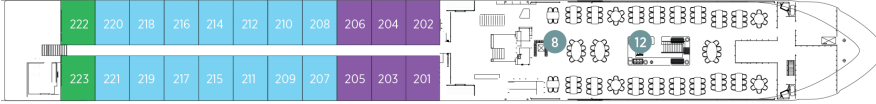
SUN DECK



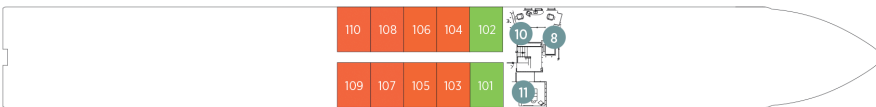
HORIZON DECK



VISTA DECK

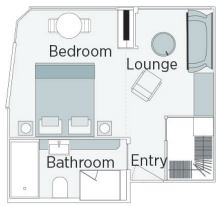


RIVIERA DECK



Public Areas and Ship Amenities

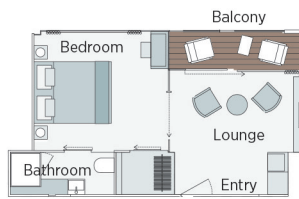
- 1 Sun Deck with Deck Chairs
- 2 Navigation Bridge
- 3 Sky Barbeque
- 4 Walking Track
- 5 Serenity Pool
- 6 The Terrace
- 7 Horizon Bar & Lounge
- 8 Elevator
- 9 Reception
- 10 Wellness Area
- 11 Fitness Area
- 12 Reflections Restaurant



Emerald Riverview Suite

300ft²

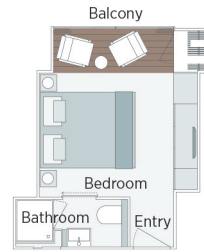
CAT RA



Owner's One-Bedroom Suite

285ft²

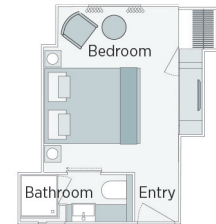
CAT SA



Panorama Balcony Suite

160ft² – 180ft²

CAT B CAT C CAT R CAT A CAT P



Emerald Stateroom

153ft² – 170ft²

CAT D CAT E

Dates: April 29 – May 9, 2026

(11 Days - Includes One Overnight Flight)

SPECIAL SAVINGS UNTIL 4/29/2025

CALL FOR DETAILS

Deposits: 20%* per person NOW holds your place

**Percentage of total price*

FINAL PAYMENT DATE: January 21, 2026

CANCELLATION FEES:

\$400 now – January 21, 2026 100% After – January 21, 2026

Price Includes:

- ✓ Roundtrip Airfare from ABQ
- ✓ First-class service and tours from an English-speaking crew and knowledgeable local guides
- ✓ All Gratuities Included (except hotel & ship housekeeping)
- ✓ Deluxe hotels with all service charges, taxes and portage included
- ✓ Government Fees, Port & Air Taxes
- ✓ Complimentary Wi-Fi
- ✓ Your SUN TOURS/ PLEASUREBENT TOURS Escort (with 15 or more travelers)

TRAVEL PROTECTION is available through Travelex Plan.

Call for details

Portugal and the Douro River Cruise

| | | | APRIL 29, 2026 | |
|-----|---------------------------|---------|---------------------------|------------------------|
| CAT | STATEROOM / SUITE | DECK | FULL FARE PER PERSON TWIN | EARLY BOOKING DISCOUNT |
| E | Emerald Stateroom | Riviera | \$8,555 | \$6,695 |
| D | Emerald Stateroom | Riviera | \$8,815 | \$6,965 |
| C | Panorama Balcony Suite | Vista | \$9,225 | \$7,365 |
| B | Panorama Balcony Suite | Vista | \$9,295 | \$7,445 |
| A | Panorama Balcony Suite | Horizon | \$10,105 | \$8,255 |
| SA | Owner's One-Bedroom Suite | Horizon | \$10,855 | \$9,005 |

Please call for single occupancy pricing.

FOR RESERVATIONS OR INFORMATION CONTACT:



1700 Louisiana NE, Suite 100
 Albuquerque, NM 87110
505-889-8888
 www.SunToursUS.com
 service@SunToursUS.com