

Let's Cruise & Tours

**FREE  
AIRFARE**  
+ \$200<sup>PER</sup>  
PERSON  
**SAVINGS**  
WHEN BOOKED  
BY 8/31/2025

**LOCAL  
PICK UP  
INCLUDED**  
ASK FOR DETAILS



# Tulip Time on the Rhine and Golden Pass Rail

Switzerland • France • Germany • the Netherlands

Departure Date: April 6, 2026

# Tulip Time on the Rhine and Golden Pass Rail



Enjoy seven-nights cruising the Rhine River aboard an Emerald Star-Ship



Charming scenes abound in Strasbourg, France

**DAY 1 Depart the USA:** Depart the USA on your overnight flight to Geneva, Switzerland.

**DAY 2 Geneva – Lausanne, Switzerland:** Welcome to Switzerland! You will be met at the airport and transferred by coach to the beautiful city of Lausanne. Flights should arrive by 3:00pm. The remainder of the day is at leisure to begin exploring your new surroundings. Enjoy an included dinner this evening at the hotel. **Meal: D**

**DAY 3 Lausanne:** Begin the day with a panoramic tour of the city, known around the world for its spectacular setting, and home of the International Olympic Committee and Museum. This afternoon, visit Château de Chillon, one of Europe's best-preserved medieval castles, on the shores of Lake Geneva. Surrounded by breathtaking scenery, discover the history of this 13th-century fortress. Learn about the château's association with famous authors and artists; the counts and dukes who inhabited it as well as the prisoners who occupied the jail; see period furnishings, art treasures and frescoes. The beauty of the area continues to amaze during a cruise on Lake Geneva from the harbor in Montreux. Relax onboard as the spectacular scenery unfolds while sailing back to Lausanne before returning to the hotel. **Meal: B**

**DAY 4 Lausanne / Golden Pass:** Today may be a highlight of your time in Switzerland as you experience a unique rail journey and mountain adventure. Depart by coach to Montreux where it's 'all aboard' the Golden Pass for an unforgettable panoramic train ride through the scenic landscapes of the Alps. Disembark the train in Gstaad where the coach is waiting to take you to Col du Pillon for the Glacier 3000 mountain adventure. Ascend via arial cable car to an altitude of approximately 9850' above sea level where you are met with astounding panoramic views, including the Matterhorn and Jungfrau. Walk across the world's first suspension bridge connecting two mountain summits, if you dare! Return to the hotel in Lausanne this afternoon. **Meal: B**

**DAY 5 Lausanne:** The day is left free of planned activities for your independent exploration. If you prefer, join an optional excursion to visit the village of Gruyère (famous for cheese-making) and Maison Cailler Chocolate Factory. **Meal: B**

**DiscoverMORE:** Visit to Gruyère and Maison Cailler Chocolate Factory (additional expense)

**DAY 6 Lausanne - Huningue, France:** After breakfast, depart Lausanne and travel by coach to Huningue for embarkation of the Emerald Cruises Star-Ship and start of the cruise along the Rhine River. Settle into your stateroom and enjoy your first meal onboard at dinner this evening. **Meals: B, D**

**DAY 7 Breisach, Germany:** Experience the 'tale of two cities': Breisach, Germany and Neuf-Breisach, France, divided by the Rhine. During the guided visit to these two wonderful gems on the Rhine River, you'll pass the main sights and attractions, including the UNESCO World Heritage fortress overlooking Neuf-Breisach. This evening, enjoy local entertainment onboard. **Meals: B, L, D**  
**EmeraldACTIVE:** Guided bike tour in Breisach  
**DiscoverMORE:** Guided tour of Colmar (additional expense)

**DAY 8 Strasbourg, France:** Arrive in Strasbourg, the capital city of the Alsace Region in France. The guided walking tour takes you along narrow lanes and across footbridges as you discover the Grande Île, the historical city center and UNESCO World Heritage Site. Known for its medieval black and white timber-framed buildings, picturesque le Petite France, old tanning houses, canals and river locks, the city's star attraction is the ornate cathedral, dominating the main square. This afternoon, the city is yours to explore at leisure. **Meals: B, L, D**  
**DiscoverMORE:** Baden Baden Spa Experience (additional expense)  
**EmeraldACTIVE:** Active walk to Orangerie Park

**DAY 9 Mannheim, Germany – Schwetzingen:** Relax onboard as the vessel cruises along the Rhine River to Mannheim. Upon arrival travel by coach to visit Schwetzingen Palace, famous for the beauty and harmony of its gardens. Visit the interior of the palace, along with the beautiful gardens, maintained in their original design. Today they remain a cultural heritage site of European significance, and contain more than 100 sculptures scattered throughout the grounds. Alternatively, embark on an active journey to the quaint wellness town of Bad-Dürkheim for a hike through the beautiful vineyards. Enjoy local entertainment onboard this evening. **Meals: B, L, D**  
**EmeraldPLUS:** Visit to Schwetzingen Palace & Gardens  
**EmeraldACTIVE:** Guided vineyard hike in Bad-Dürkheim (instead of included tour)  
**DiscoverMORE:** Guided tour of Heidelberg (additional expense)



Flowers and fragrances fill Keukenhof Gardens

**DAY 10 Koblenz:** Begin the day sailing through the spectacular UNESCO World Heritage Rhine Gorge. Pass countless medieval castles and vineyards lining the shores of this section of the river, with photo opportunities around every bend. See the infamous Lorelei statue and Pfalzgrafenstein Castle, built on an island in the middle of the river as a medieval toll station. Continue cruising to the 2000-year-old town of Koblenz, situated at the confluence of the Rhine and Moselle Rivers. Enjoy a walking tour of Koblenz seeing the German Corner where the 2 rivers meet and the Church of Our Lady. **Meals: B, L, D**

**DiscoverMORE:** Moselle & Cochem (Reichsburg) Castle Visit (additional expense)

NOTE: You can choose either the included tour of Koblenz OR the DiscoverMORE option, as both tours operate at the same time.

**DAY 11 Cologne > Düsseldorf:** Join a walking tour of Düsseldorf, a vibrant city renowned for its stylish boutiques and charming Old Town. Stroll along the picturesque Rhine River, admire the stunning architecture, and discover hidden gems off the beaten path. Later this day we will arrive in Cologne, famous for its Gothic Cathedral. This afternoon you can immerse yourself in the city's lively atmosphere, indulge in delicious local cuisine, and experience the unique charm of the city. **Meals: B, L, D**

**DiscoverMORE:** Cologne beer experience (additional expense)

**EmeraldACTIVE:** Active walk to Cologne's Gardens

**DAY 12 Amsterdam, the Netherlands:** This morning, depart by coach for an included visit to the world-famous Keukenhof Gardens. Discover why it's called the "Garden of Europe" as you wander along the paths, admiring gorgeous flowers at the peak of tulip season. Unique flower shows in the pavilions along with colorful, artistic floral displays throughout the manicured garden, are sure to please! Return to the ship in the afternoon to explore the city of Amsterdam at your leisure. **Meals: B, L, D**

**EmeraldPLUS:** Clog Painting onboard

**DiscoverMORE:** Dutch Culinary Delights (additional expense)

**DAY 13 Amsterdam / USA:** Bid 'auf wiedersehen' to Europe and return home with memories of life enriching experiences from your European adventure and cruise along the Rhine River during tulip time. **Meal: B**

Itinerary and excursions are subject to change.



## Exceptional Inclusions

- 25 Meals: 11 breakfasts, 6 lunches and 8 dinners
- Airport transfers on tour dates when air is provided by Mayflower Cruises & Tours
- Visit four countries
- Four-night hotel stay and touring in Lausanne
- Visit to Château de Chillon on Lake Geneva
- Cruise on Lake Geneva
- Scenic journey aboard the Golden Pass Railway
- Glacier 3000 Mountain Adventure
- Seven-nights in a suite or stateroom of your choice onboard the vessel
- First-class service by an English-speaking crew
- All gratuities included
- Explore the magnificent Keukenhof Gardens
- Shore excursions with English-speaking local guides
- Visit UNESCO World Heritage Sites
- Personal listening device for shore excursions
- All meals included onboard
- Variety of international cuisine
- Complimentary regional wines, beer and soft drinks with onboard lunches and dinners
- Onboard Activity Manager will support all EmeraldACTIVE excursions and host daily onboard wellness activities, games, classes and evening entertainment
- Complimentary bottled water in your stateroom
- Complimentary WiFi onboard
- Complimentary bicycles onboard for use ashore
- All port charges included

### CRUISE AND HOTEL ACCOMMODATIONS

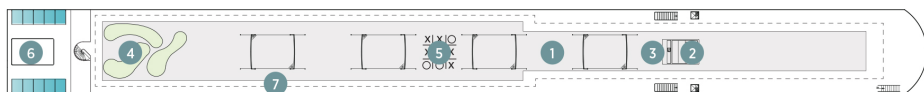
**Days 2 through 5** – Movenpick Hotel or similar, Lausanne, Switzerland

**Days 6 through 12** – Aboard an Emerald Cruises Star-Ship  
Post-cruise hotel stays available in Amsterdam. Call for details.

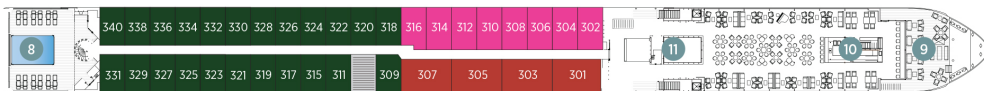
# Emerald Cruises Star-Ships

**Built:** 2014-2026 **Speed:** 15.5 mph **Staterooms:** 19 **Suites:** 72 **Length:** 443 ft. **Crew:** 47

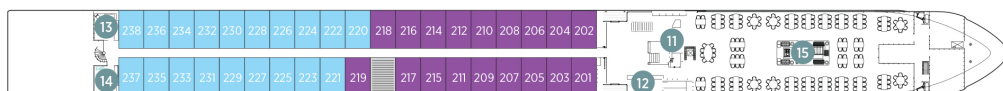
## SUN DECK



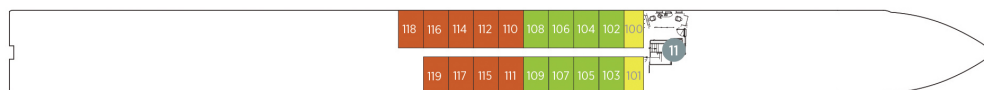
## HORIZON DECK



## VISTA DECK

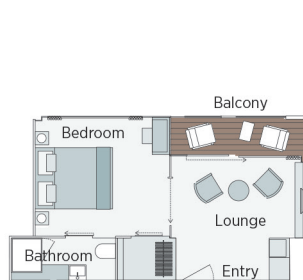


## RIVIERA DECK



## Public Areas and Ship Amenities

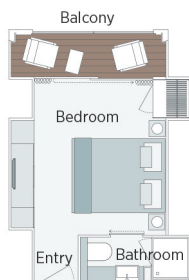
- 1 Sun Deck with Deck Chairs
- 2 Navigation Bridge
- 3 Sky Barbeque
- 4 Golf Putting Green
- 5 Games Area
- 6 Retractable Glass Roof
- 7 Walking Track
- 8 Daytime Pool / Evening Cinema
- 9 The Terrace
- 10 Horizon Bar and Lounge
- 11 Elevator
- 12 Reception
- 13 Wellness Area
- 14 Fitness Area
- 15 Reflections Restaurant



**Owner's One-Bedroom Suite**

315ft<sup>2</sup>

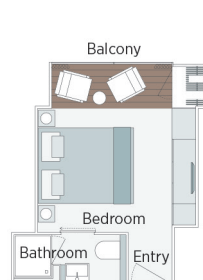
**CAT SA**



**Grand Balcony Suite**

210ft<sup>2</sup>

**CAT S**



**Panorama Balcony Suite**

180ft<sup>2</sup>

**CAT A CAT B CAT C**



**Emerald Stateroom**

162ft<sup>2</sup>

**CAT D CAT E**

## Tulip Time on the Rhine and Golden Pass Rail

		APRIL 6, 2026	
CAT	STATEROOM / SUITE	DECK	
E	Emerald Stateroom	Riviera	\$6,155
D	Emerald Stateroom	Riviera	\$6,509
C	Panorama Balcony Suite	Vista	\$7,259
B	Panorama Balcony Suite	Vista	\$7,465
A	Panorama Balcony Suite	Horizon	\$7,609
S	Grand Balcony Suite	Horizon	\$8,359
SA	Owner's One-Bedroom Suite	Horizon	\$9,395

**Pricing includes Roundtrip Airfare from Tampa International, River Cruise aboard an Emerald StarShip, Taxes, Transfers and All Gratuities**



## Travelers Protection Plan (TPP) for River Cruises - \$569 per person

This nonrefundable fee will provide a refund to you during the instance that you have to cancel your trip. The cancellation has to be for a covered reason (see Plan for details on coverage) and we have to be notified at least one day prior to departure. If you must leave the tour early due to personal illness or the illness or death of an immediate family member, TPP will provide a refund for any unused services after the departure of the tour. Other benefits include medical expenses for illness and injury, emergency transportation, 24 hour hot line and lost or stolen baggage assistance. Return air transportation is included ONLY if your air tickets are purchased through Mayflower Cruises & Tours. Please review the Plan for details on coverage. Should you choose not to purchase our TPP, the following per person cancellation charges will be assessed for all tours and optional excursion costs:

- 91 days or more prior to departure: Deposit Amount
- 90 days to day of departure: 100% of total tour
- No refund on unused portions of the tour

**Exclusions:** Mayflower Cruises & Tours reserves the right to alter its Refund and Cancellation Policy when a substantial amount of cancellation or postponement of travel is attributable to: conditions resulting from an act of God, natural or man-made disaster, fire, government action, civil disorder, war, hostilities between nations, or unavailability of transportation through no fault of Mayflower Cruises & Tours. *Plan and benefits offered and administered by Trip Mate, Inc.*

FOR RESERVATIONS OR INFORMATION CONTACT:



**Kathy Suter**

**Cell: 941-809-6633**

**kathy.suter@cruiseplanners.com**

**941-313-3111x103**