

Platte Valley Bank

**FREE  
AIRFARE**  
+ \$250 SAVINGS  
PER PERSON  
BOOK BY  
6/30/25



# Tulip Time on Jewels of the Rhine

Switzerland • France • Germany • the Netherlands

Tour Dates: April 8 - 18, 2026

  
**Mayflower**  
CRUISES & TOURS  
A DIVISION OF THE SCENIC GROUP

# Tulip Time on Jewels of the Rhine



The historic Chapel Bridge crosses the Reuss River in Lucerne, Switzerland



Charming scenes abound in Strasbourg, France

**DAY 1 Depart the USA:** Today you'll depart the USA on your overnight flight to Zurich, Switzerland.

**DAY 2 Zurich to Lucerne, Switzerland:** Upon arrival in Zurich, transfer to your hotel in Lucerne to begin your Swiss adventure. Flights should arrive by 3:00pm. The afternoon is at leisure to begin discovering your beautiful new surroundings. This evening, join your Mayflower representative and traveling companions for an included dinner at the hotel. **Meal: D**

**DAY 3 Lucerne:** After breakfast, an included walking tour highlights the city's landmark, the famous 14th-century Chapel Bridge with its paintings of heroic town events, that crosses the Reuss River. See the 17th-century Renaissance Town Hall and town squares, all set amongst the beautiful backdrop of the Swiss Alps. The remainder of the day is at leisure. **Meal: B**

**DAY 4 Lucerne – Huningue, France:** Before departing for your ship in Huningue, the day is free to enjoy at leisure or join the morning optional excursion to Mt. Pilatus – a mountain overlooking Lucerne that offers a unique alpine experience! This afternoon, travel by motorcoach to Huningue, France for embarkation of your Emerald Cruises luxury Star-Ship. This evening, join your fellow travelers for dinner onboard. **Meals: B, D**  
**DiscoverMORE:** Mt. Pilatus (additional expense)

**DAY 5 Breisach, Germany:** Today discover the enchanting city of Freiburg, nestled amidst the Black Forest. Explore its historic center, lined with colorful half-timbered houses and a vibrant market square. Wander through the picturesque botanical garden, showcasing a diverse array of flora. For a more active experience, choose an exhilarating bike tour around Breisach, a charming medieval town with stunning views of the Rhine River. Immerse yourself in the natural beauty and cultural richness of this captivating region. **Meals: B, L, D**  
**EmeraldACTIVE:** Guided bike tour in Breisach  
**DiscoverMORE:** Guided tour of Colmar (additional expense)

**DAY 6 Strasbourg, France:** Arrive in Strasbourg, the capital city of the Alsace Region in France. The guided walking tour takes you along narrow lanes and across footbridges as you discover the Grande Île, the historical city center and UNESCO World Heritage Site. Known for its medieval black and white timber-framed buildings, picturesque le Petite France, old tanning houses, canals and river locks, the city's star attraction is the ornate cathedral, dominating the main square. This afternoon, the city is yours to explore at leisure. **Meals: B, L, D**  
**DiscoverMORE:** Baden Baden Spa Experience (additional expense)  
**EmeraldACTIVE:** Active walk to Orangerie Park

**DAY 7 Gernersheim, Germany – Schwetzingen:** Relax onboard as the vessel cruises along the Rhine River to Gernersheim. Upon arrival travel by coach to visit Schwetzingen Palace, famous for the beauty and harmony of its gardens. Visit the interior of the palace, along with the beautiful gardens, maintained in their original design. Today they remain a cultural heritage site of European significance, and contain more than 100 sculptures scattered throughout the grounds. Alternatively, embark on an active journey to the quaint wellness town of Bad-Dürkheim for a hike through the beautiful vineyards. This evening, enjoy local entertainment onboard. **Meals: B, L, D**  
**EmeraldPLUS:** Visit to Schwetzingen Palace & Gardens  
**EmeraldACTIVE:** Guided vineyard hike in Bad-Dürkheim (instead of included tour)  
**DiscoverMORE:** Guided tour of Heidelberg (additional expense)

**DAY 8 Koblenz:** Begin the day sailing through the spectacular UNESCO World Heritage Rhine Gorge. Pass countless medieval castles and vineyards lining the shores of this section of the river, with photo opportunities around every bend. See the infamous Lorelei statue and Pfalzgrafenstein Castle, built on an island in the middle of the river as a medieval toll station. Continue cruising to the 2000-year-old town of Koblenz, situated at the confluence of the Rhine and Moselle Rivers.



Flowers and fragrances fill Keukenhof Gardens

Enjoy a walking tour of Koblenz seeing the German Corner where the 2 rivers meet and the Church of Our Lady.

**Meals: B, L, D**

**DiscoverMORE:** Moselle & Cochem (Reichsburg) Castle Visit (additional expense)

NOTE: You can choose either the included tour of Koblenz OR the DiscoverMORE option, as both tours operate at the same time.

**DAY 9 Düsseldorf – Cologne:** Join a walking tour of Düsseldorf, a vibrant city renowned for its stylish boutiques and charming Old Town. Stroll along the picturesque Rhine River, admire the stunning architecture, and discover hidden gems off the beaten path. Later this day we will arrive in Cologne, famous for its Gothic Cathedral. This afternoon you can immerse yourself in the city's lively atmosphere, indulge in delicious local cuisine, and experience the unique charm of the city. **Meals: B, L, D**

**DiscoverMORE:** Cologne beer experience (additional expense)

**EmeraldACTIVE:** Active walk to Cologne's Gardens

**DAY 10 Amsterdam, the Netherlands:** This morning, depart by coach for an included visit to the world-famous Keukenhof Gardens. Discover why it's called the "Garden of Europe" as you wander along the paths, admiring gorgeous flowers at the peak of tulip season. Unique flower shows in the pavilions along with colorful, artistic floral displays throughout the manicured garden, are sure to please! Return to the ship in the afternoon to explore the city of Amsterdam at your leisure. **Meals: B, L, D**

**EmeraldPLUS:** Clog painting onboard

**DiscoverMORE:** Dutch Culinary Delights (additional expense)

**DAY 11 Amsterdam / USA:** Bid 'auf wiedersehen' to Europe and return home with memories of life enriching experiences from your European adventure and cruise along the Rhine River during tulip time. **Meal: B**

Itinerary and excursions are subject to change.



## Exceptional Inclusions

- **23 Meals:** 9 breakfasts, 6 lunches and 8 dinners
- **Airport transfers** on tour dates when air is provided by Mayflower Cruises & Tours
- **Visit four countries**
- **Two-night hotel stay and touring in Lucerne**
- **Seven-nights in a suite or stateroom** of your choice onboard the vessel
- **First-class service** by an English-speaking crew
- **All gratuities included**
- Explore the magnificent **Keukenhof Gardens**
- **Shore excursions** with English-speaking local guides
- Visit **UNESCO World Heritage Sites**
- Personal **listening device** for shore excursions
- **All meals included** onboard
- Variety of **international cuisine**
- Complimentary **regional wines, beer and soft drinks** with onboard lunches and dinners
- **Onboard Activity Manager** will support all EmeraldACTIVE excursions and host daily onboard wellness activities, games, classes and evening entertainment
- Complimentary **bottled water** in your stateroom
- Complimentary **WiFi onboard**
- Complimentary **bicycles onboard** for use ashore
- **All port charges included**

## CRUISE AND HOTEL ACCOMMODATIONS

**Days 2 and 3** – Hotel Europe or similar, Lucerne, Switzerland

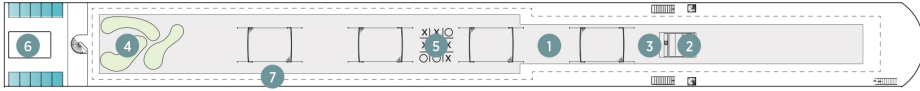
**Days 4 through 10** – Aboard an Emerald Cruises Star-Ship

Post-cruise hotel stays available in Amsterdam. Call for details.

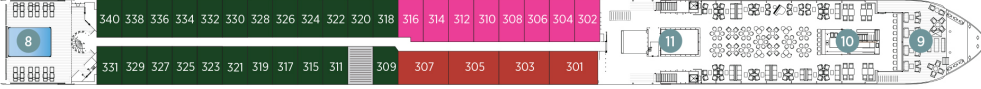
# Emerald Cruises Star-Ships

**Built:** 2014-2026 **Speed:** 15.5 mph **Staterooms:** 19 **Suites:** 72 **Length:** 443 ft. **Crew:** 47

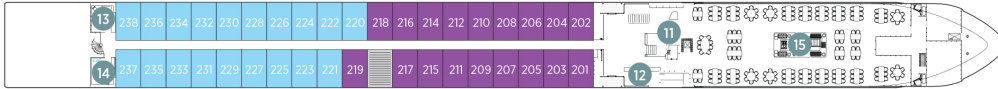
## SUN DECK



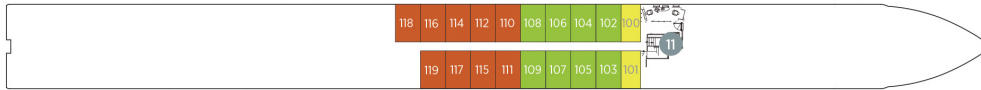
## HORIZON DECK



## VISTA DECK

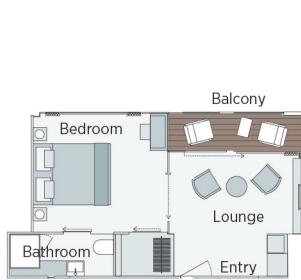


## RIVIERA DECK



## Public Areas and Ship Amenities

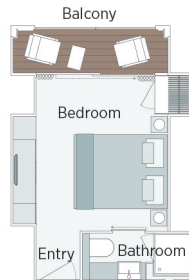
- 1 Sun Deck with Deck Chairs
- 2 Navigation Bridge
- 3 Sky Barbeque
- 4 Golf Putting Green
- 5 Games Area
- 6 Retractable Glass Roof
- 7 Walking Track
- 8 Daytime Pool / Evening Cinema
- 9 The Terrace
- 10 Horizon Bar and Lounge
- 11 Elevator
- 12 Reception
- 13 Wellness Area
- 14 Fitness Area
- 15 Reflections Restaurant



**Owner's One-Bedroom Suite**

315ft<sup>2</sup>

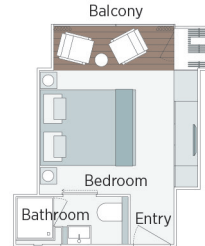
**CAT SA**



**Grand Balcony Suite**

210ft<sup>2</sup>

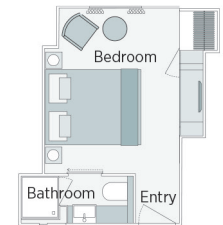
**CAT S**



**Panorama Balcony Suite**

180ft<sup>2</sup>

**CAT A CAT B CAT C**



**Emerald Stateroom**

162ft<sup>2</sup>

**CAT D CAT E**

## Tulip Time on Jewels of the Rhine

		April 8 - 18, 2026	
CAT	STATEROOM / SUITE	DECK	
E	Emerald Stateroom	Riviera	\$5,315
D	Emerald Stateroom	Riviera	\$5,425
C	Panorama Balcony Suite	Vista	\$6,085
B	Panorama Balcony Suite	Vista	\$6,389
A	Panorama Balcony Suite	Horizon	\$6,689
S	Grand Balcony Suite	Horizon	\$7,159
SA	Owner's One-Bedroom Suite	Horizon	\$8,115

**FREE Air PLUS Save \$200 per person – Book by 6/30/25**

Call for air promotion after this date.

Full fare airfare from DEN = \$1,550 per person



## Travelers Protection Plan (TPP) for River Cruises - \$569 per person for cruise tour priced from \$5,001 and up

This nonrefundable fee will provide a refund to you during the instance that you have to cancel your trip. The cancellation has to be for a covered reason (see Plan for details on coverage) and we have to be notified at least one day prior to departure. If you must leave the tour early due to personal illness or the illness or death of an immediate family member, TPP will provide a refund for any unused services after the departure of the tour. Other benefits include medical expenses for illness and injury, emergency transportation, 24 hour hot line and lost or stolen baggage assistance. Return air transportation is included ONLY if your air tickets are purchased through Mayflower Cruises & Tours. Please review the Plan for details on coverage. Should you choose not to purchase our TPP, the following per person cancellation charges will be assessed for all tours and optional excursion costs:

- 91 days or more prior to departure: Deposit Amount
- 90 days to day of departure: 100% of total tour
- No refund on unused portions of the tour

**Exclusions:** Mayflower Cruises & Tours reserves the right to alter its Refund and Cancellation Policy when a substantial amount of cancellation or postponement of travel is attributable to: conditions resulting from an act of God, natural or man-made disaster, fire, government action, civil disorder, war, hostilities between nations, or unavailability of transportation through no fault of Mayflower Cruises & Tours. *Plan and benefits offered and administered by Trip Mate, Inc.*



FOR RESERVATIONS OR INFORMATION CONTACT:

**Jill Allen**  
**Platte Valley Bank**  
 1212 Circle Dr Scotts Bluff, NE 69361  
 308-633-9308  
 jallen@pvbank.com