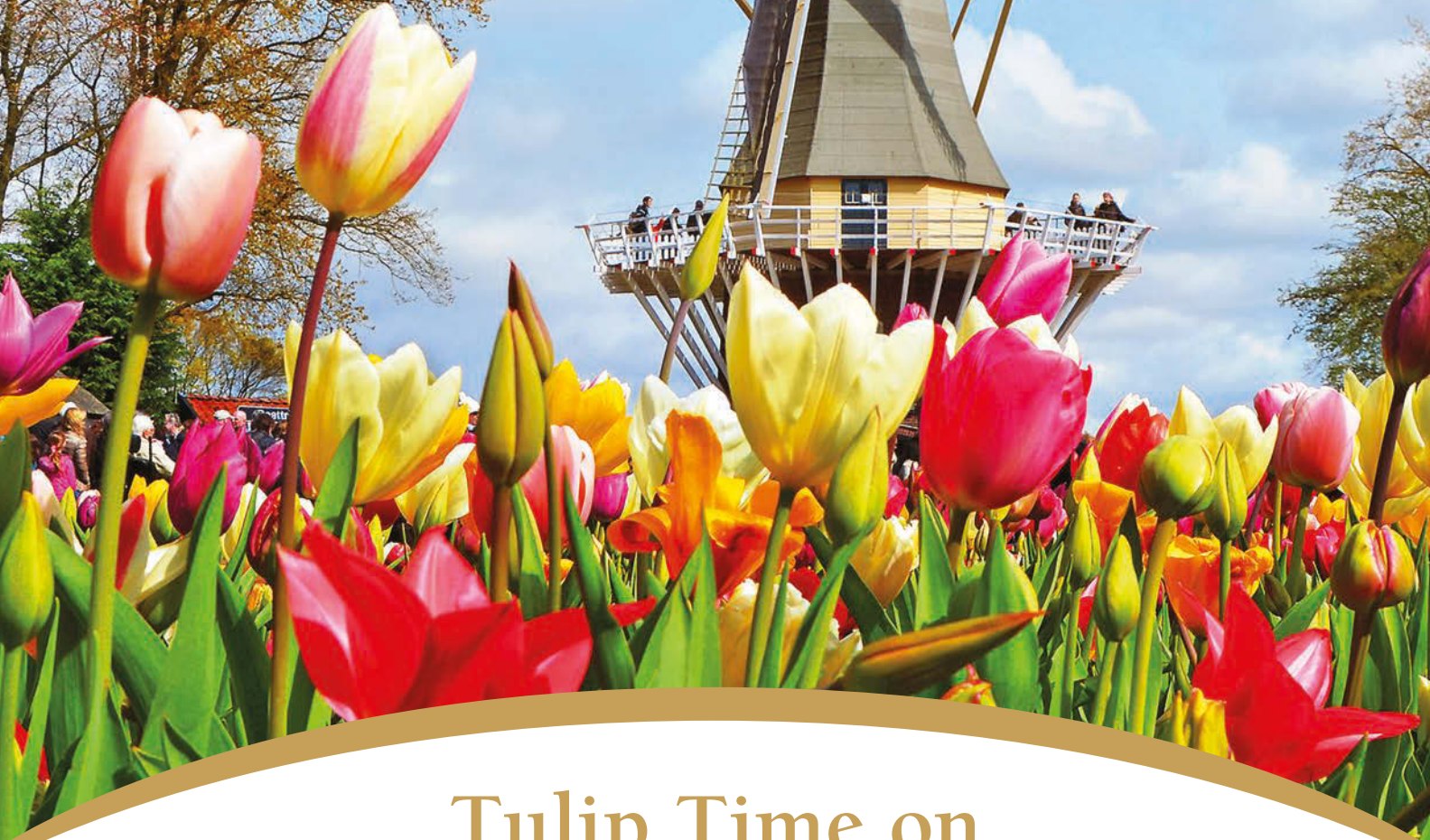




**FREE
AIRFARE**

CALL FOR DETAILS



Tulip Time on Jewels of the Rhine

Switzerland • France • Germany • the Netherlands

Departure Date: April 2, 2025



Tulip Time on Jewels of the Rhine



The historic Chapel Bridge crosses the Reuss River in Lucerne, Switzerland



Charming scenes abound in Strasbourg, France

DAY 1 Depart the USA: Today you'll depart the USA on your overnight flight to Zurich, Switzerland.

DAY 2 Zurich to Lucerne, Switzerland: Upon arrival in Zurich, transfer to your hotel in Lucerne to begin your Swiss adventure. Flights should arrive by 3:00pm. The afternoon is at leisure to begin discovering your beautiful new surroundings. This evening, join your Mayflower representative and traveling companions for an included dinner at the hotel. **Meal: D**

DAY 3 Lucerne: After breakfast, an included walking tour highlights the city's landmark, the famous 14th-century Chapel Bridge with its paintings of heroic town events, that crosses the Reuss River. See the 17th-century Renaissance Town Hall and town squares, all set amongst the beautiful backdrop of the Swiss Alps. The remainder of the day is at leisure. **Meal: B**

DAY 4 Lucerne – Basel: Before departing for your ship in Basel, the day is free to enjoy at leisure or join the morning optional excursion to Mt. Pilatus – a mountain overlooking Lucerne that offers a unique alpine experience! This afternoon, travel by motorcoach to Basel, Switzerland for embarkation of your Emerald Cruises luxury Star-Ship. This evening, join your fellow travelers for dinner onboard. **Meals: B, D**

DiscoverMORE: Mt. Pilatus (additional expense)

DAY 5 Breisach, Germany: Experience the 'tale of two cities': Breisach, Germany and Neuf-Breisach, France, divided by the Rhine. During the guided visit to these two wonderful gems on the Rhine River, you'll pass the main sights and attractions, including the UNESCO World Heritage fortress overlooking Neuf-Breisach. **Meals: B, L, D**

EmeraldPLUS: A tale of two cities divided by the Rhine

EmeraldACTIVE: Guided bike tour in Breisach

DAY 6 Strasbourg, France: Once docked in Kehl, coaches await to take you across the river to Strasbourg, the capital city of the Alsace Region in France. The guided walking tour takes you along narrow lanes and across footbridges as you discover the Grande Île, the historical city center and UNESCO World Heritage Site. Known for its medieval black and white timber-framed buildings, picturesque le Petite France, old tanning houses, canals and river locks, the city's star attraction is the ornate cathedral, dominating the main square. This afternoon, the city is yours to explore at leisure. **Meals: B, L, D**

DAY 7 Ludwigshafen, Germany – Schwetzingen: Relax onboard as the vessel cruises along the Rhine River to Ludwigshafen. Upon arrival travel by coach to visit Schwetzingen Palace, famous for the beauty and harmony of its gardens. Visit the interior of the palace, along with the beautiful gardens, maintained in their original design. Today they remain a cultural heritage site of European significance, and contain more than 100 sculptures scattered throughout the grounds. Alternatively, embark on an active journey to the quaint wellness town of Bad-Dürkheim for a hike through the beautiful vineyards. **Meals: B, L, D**

EmeraldPLUS: Visit to Schwetzingen Palace & Gardens

EmeraldACTIVE: Guided vineyard hike in Bad-Dürkheim (instead of included tour)

DAY 8 Koblenz: Begin the day sailing through the spectacular UNESCO World Heritage Rhine Gorge. Pass countless medieval castles and vineyards lining the shores of this section of the river, with photo opportunities around every bend. See the infamous Lorelei statue and Pfalzgrafenstein Castle, built on an island in the middle of the river as a medieval toll station. Continue cruising to the 2000-year-old town of Koblenz, situated at the confluence of the Rhine and Moselle Rivers. Enjoy a walking tour of Koblenz seeing the German Corner where the 2 rivers meet, the Church of Our Lady, and visit



Flowers and fragrances fill Keukenhof Gardens

the Ehrenbreitstein Fortress by cable car on the opposite side of the river. This fortress was part of the Prussian defense against the French in the 19th century and later used as a headquarters for the American military during WWII.

Meals: B, L, D

DiscoverMORE: Moselle & Cochem (Reichsburg) Castle Visit (additional expense)

DAY 9 Cologne: Continue cruising along the Rhine River to Cologne. Founded by the Romans, the city is one of Germany's oldest and is famous for its magnificent UNESCO World Heritage gothic cathedral. Join your local guide for an included walking tour of the city, touching on the historical charm of the Old Town and its Roman history. Traverse the quaint alleyways and see historic monuments alongside modern architecture. The tour concludes at the cathedral, whose twin spires dominate the skyline. A visit to Cologne Botanical Gardens is also included, where a local expert accompanies you through the gardens, explaining about the flora and history of the park. This evening, back onboard, join your Captain for a farewell reception and dinner. **Meals: B, L, D**

DAY 10 Amsterdam, the Netherlands: This morning, depart by coach for an included visit to the world-famous Keukenhof Gardens. Discover why it's called the "Garden of Europe" as you wander along the paths, admiring gorgeous flowers at the peak of tulip season. Unique flower shows in the pavilions along with colorful, artistic floral displays throughout the manicured garden, are sure to please! Return to the ship in the afternoon to explore the city of Amsterdam at your leisure. **Meals: B, L, D**

DAY 11 Amsterdam / USA: Bid 'auf wiedersehen' to Europe and return home with memories of life enriching experiences from your European adventure and cruise along the Rhine River during tulip time. **Meal: B**

Itinerary is subject to change.



Exceptional Inclusions

- **23 Meals:** 9 breakfasts, 6 lunches and 8 dinners
- **Airport transfers** on tour dates when air is provided by Mayflower Cruises & Tours
- Visit **four countries**
- Two-night **hotel stay and touring in Lucerne**
- **Seven-nights in a suite or stateroom** of your choice onboard the vessel
- **First-class service** by an English-speaking crew
- **All gratuities included**
- Explore the magnificent **Keukenhof Gardens**
- **Shore excursions** with English-speaking local guides
- Visit **UNESCO World Heritage Sites**
- Personal **listening device** for shore excursions
- **All meals included** onboard
- Variety of **international cuisine**
- Complimentary **regional wines, beer and soft drinks** with onboard lunches and dinners
- **Onboard Activity Manager** will support all EmeraldACTIVE excursions and host daily onboard wellness activities, games, classes and evening entertainment
- Complimentary **bottled water** in your stateroom
- Complimentary **WiFi onboard**
- Complimentary **bicycles onboard** for use ashore
- **All port charges included**

CRUISE AND HOTEL ACCOMMODATIONS

Days 2 and 3 – Hotel Europe or similar, Lucerne, Switzerland

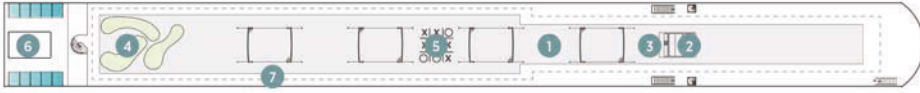
Days 4 through 10 – Aboard an Emerald Cruises Star-Ship

Post-cruise hotel stays available in Amsterdam. Call for details.

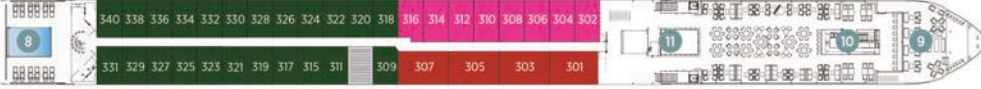
Emerald Cruises Star-Ships

Built: 2014-20 **Speed:** 15.5 mph **Staterooms:** 19 **Suites:** 72 **Length:** 443 ft. **Crew:** 47

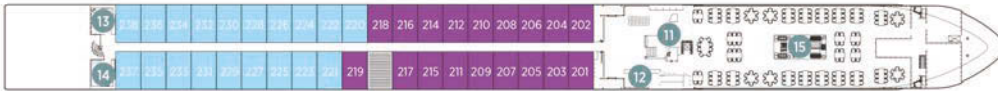
SUN DECK



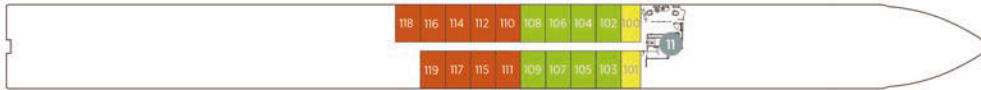
HORIZON DECK



VISTA DECK

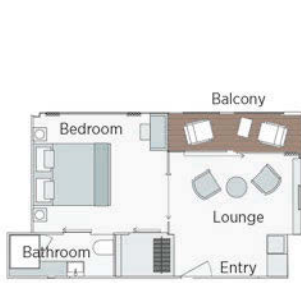


RIVIERA DECK



Public Areas and Ship Amenities

- 1 Sun Deck with Deck Chairs
- 2 Navigation Bridge
- 3 Sky Barbeque
- 4 Golf Putting Green
- 5 Games Area
- 6 Retractable Glass Roof
- 7 Walking Track
- 8 Daytime Pool / Evening Cinema
- 9 The Terrace
- 10 Horizon Bar and Lounge
- 11 Elevator
- 12 Reception
- 13 Wellness Area
- 14 Fitness Area
- 15 Reflections Restaurant



Owner's One-Bedroom Suite

315ft²

CAT SA



Grand Balcony Suite

210ft²

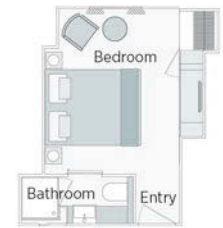
CAT S



Panorama Balcony Suite

180ft²

CAT A CAT B CAT C



Emerald Stateroom

162ft²

CAT D CAT E

2025 Departure Date
Tulip Time on Jewels of the Rhine

CAT	STATEROOM / SUITE	DECK	APR 2	
			PER PERSON TWIN	SINGLE ROOM ADD
E	Emerald Stateroom	Riviera	\$5,628	+ \$3,539
D	Emerald Stateroom	Riviera	\$5,734	+ \$3,615
C	Panorama Balcony Suite	Vista	\$6,364	+ \$4,055
B	Panorama Balcony Suite	Vista	\$6,654	+ \$4,259
A	Panorama Balcony Suite	Horizon	\$6,938	+ \$4,459
S	Grand Balcony Suite	Horizon	\$7,384	N/A
SA	Owner's One-Bedroom Suite	Horizon	\$8,294	N/A

FREE AIRFARE WHEN BOOKED BY MARCH 31, 2024
After March 31, 2024 phone for airfare rates.

Pricing includes Travelers Protection Plan.

Air itineraries may not be available until documents are received. Air seats are assigned by the airline for the entire group. Seat changes can only be attempted upon receipt of tickets and documents at which time availability may be limited. If specific seat assignments are vital to your reservation, we recommend individual air reservations rather than booking air with the group.

Travelers Protection Plan (TPP) for River Cruises - Included

This nonrefundable fee will provide a refund to you during the instance that you have to cancel your trip. The cancellation has to be for a covered reason (see Plan for details on coverage) and we have to be notified at least one day prior to departure. If you must leave the tour early due to personal illness or the illness or death of an immediate family member, TPP will provide a refund for any unused services after the departure of the tour. Other benefits include medical expenses for illness and injury, emergency transportation, 24 hour hot line and lost or stolen baggage assistance. Return air transportation is included ONLY if your air tickets are purchased through Mayflower Cruises & Tours. Please review the Plan for details on coverage. Should you choose not to purchase our TPP, the following per person cancellation charges will be assessed for all tours and optional excursion costs:

- 91 days or more prior to departure: Deposit amount
- 90 days to day of departure: 100% of total tour
- No refund on unused portions of the tour



Exclusions: Mayflower Cruises & Tours reserves the right to alter its Refund and Cancellation Policy when a substantial amount of cancellation or postponement of travel is attributable to: conditions resulting from an act of God, natural or man-made disaster, fire, government action, civil disorder, war, hostilities between nations, or unavailability of transportation through no fault of Mayflower Cruises & Tours. Plan and benefits offered and administered by Trip Mate, Inc.

FOR RESERVATIONS OR INFORMATION CONTACT:

Brenda Allen
864-940-3166
or brenda@jubileetours.us

