



Special
promotion
SAVE \$150
per person
when deposited by
8-31-23



Danube Explorer

The Czech Republic • Germany • Austria • Slovakia • Hungary

Departure Date: June 11, 2024



Danube Explorer



Old Town Square, Prague, Czech Republic



Visit the village Weissenkirchen located in the Wachau Wine Region

DAY 1 Depart the USA: Depart the USA on your overnight flight to Prague, Czech Republic.

DAY 2 Prague, Czech Republic: Welcome to the Czech Republic! Upon arrival you will be met at the airport by a representative of Mayflower Cruises and Tours and transferred to your hotel in Prague. The day is at leisure to begin discovering your new surroundings.

DAY 3 Prague: After breakfast, enjoy an included city tour, highlighting the famous sites of this beautiful city. Following a brief panoramic drive, the heart of the city is discovered on foot. See Old Town Square with its historic astronomical clock and the medieval Charles Bridge. The tour concludes at the hotel. During free time this afternoon, continue to explore the city on your own, or join the optional excursion to the Terezin Concentration Camp. **Meal: B**
DiscoverMORE: Terezin Concentration Camp (additional expense)

DAY 4 Prague – Passau, Germany: Depart Prague and journey by motorcoach to Passau, Germany, where your friendly Captain and crew welcome you onboard your luxurious Emerald Cruises Star-Ship. Enjoy the afternoon at leisure to explore the ship and become acquainted with the onboard amenities. This evening join your fellow guests for dinner onboard. **Meals: B, D**

DAY 5 Passau: Narrow cobblestone streets welcome you to Passau, a town nestled on the confluence of three of Europe's main waterways. On today's excursion, venture out to a local farm to gain a fascinating insight into the life of local Bavarian farmers. Tour the farm, see the animals and learn how the family is utilizing methods of sustainable agriculture. Meet with the farmers and sample some of their homemade specialties during an included tasting. Alternatively, if you are feeling more active, participate in a guided hike to Veste Oberhaus where you can catch a site of the Mariahilf and St. Severin, an ancient church dating back to the Ottonian dynasty. **Meals: B, L, D**
EmeraldACTIVE: Guided hike to Veste Oberhaus (instead of included city tour)
DiscoverMORE: Bavaria Live (additional expense)
EmeraldPLUS: Bavarian brunch-livestock farming and homemade specialties tasting

DAY 6 Linz, Austria / Český Krumlov, Czech Republic: Today's adventure takes you to the UNESCO World Heritage-listed town of Český Krumlov. With its 13th-century castle, meandering river,

and a maze of quaint alleyways, this town has one of the best-preserved centers in Europe. Join your local guide to traverse a labyrinth of winding cobblestone lanes as you experience the charming atmosphere of Český Krumlov's medieval buildings and iconic castle complex. During the excursion, visit the 15th-century St. Vitus' Church, a highlight of the town. **Meals: B, D**
EmeraldPLUS: A guided walking tour of Český Krumlov
DiscoverMORE*: Linzer Torte-making workshop (additional expense)
*this excursion runs at the same time as the included tour; only one can be selected.

DAY 7 Melk – Weissenkirchen: Relax as you cruise along the Danube River early this morning, passing delightful apricot orchards and beautiful terraced vineyards that produce some of the world's best wine, before arriving in Melk. Enjoy an included tour of Melk Abbey, originally a lavish castle that was gifted to Benedictine monks during the 11th century. This opulent Baroque building features ornate gold leaf walls, seemingly endless spiral staircases and is home to some of the most important collections of medieval manuscripts in the world. After the tour, sail through the idyllic Wachau Valley, passing medieval villages, terraced vineyards and areas of natural beauty. Upon arrival in Weissenkirchen, you have the opportunity to join a hike. Alternatively, stay in Melk and cycle to Weissenkirchen, traversing a route that offers a different perspective on the region's viticulture. **Meals: B, L, D**
EmeraldACTIVE*: A guided bike ride along the Danube from Melk to Weissenkirchen
EmeraldACTIVE*: Hike in Weissenkirchen with Activity Manager
DiscoverMORE*: Weissenkirchen vineyard hike with wine tasting (additional expense)
*these activities overlap; only one can be selected

DAY 8 Vienna: Welcome to Vienna, Austria's capital and the capital of classical music. The city perfectly encapsulates the opulence of the Habsburg Monarchy and their ornate Baroque palaces. On the included city tour, see monuments and grand buildings as the coach drives along the famous Ringstrasse. During the walking tour, stroll with your guide through the city center, a UNESCO World Heritage Site. Marvel at the classic architectural styles of the buildings, see St. Stephen's Cathedral and the Hofburg Palace, right in the heart of the city center. If you are feeling more active, opt to explore on two wheels, cycling along the serene trails on Danube Island. **Meals: B, L, D**
EmeraldACTIVE: Bike tour in Vienna (instead of city tour)
DiscoverMORE: An exclusive Viennese evening concert with the music of Mozart and Strauss (additional expense)



Vienna's Imperial Hofburg Palace

DAY 9 Bratislava, Slovakia: Today you sail into the capital of Slovakia. This graceful nation became an independent country in 1993, and since then, Bratislava has flourished as a new capital and made a name for itself as a cultural center. The romantic cobblestone lanes that weave through the city are explored with your local guide as you enjoy a walking tour of the ancient town center, seeing the Slovak National Theatre and a range of Gothic and Art Nouveau buildings. For the more active guests, embark on a guided hike to Bratislava Castle, a landmark steeped in legends that looks as though it came from the pages of a fairytale book. **Meals: B, L, D**
EmeraldACTIVE: A guided hike to Bratislava Castle (instead of walking tour)
DiscoverMORE: Skoda tour of post-Communist Bratislava (additional expense)
EmeraldPLUS: Local Slovakian entertainment onboard

DAY 10 Budapest, Hungary: Welcome to the “Pearl of the Danube”. Explore Budapest’s cobble medieval quarter as you embark on a coach tour through the UNESCO World Heritage city center. Your guide will highlight a number of architectural wonders and also talk about Budapest’s culinary scene. The tour will end at the Grand Market Hall, the city’s most expansive indoor food and craft market, where you’ll have time to explore on your own. If you are feeling more active, you may instead choose to hike to Buda Hill. The surrounding area has been rebuilt several times, most recently following the air raids of WWII. Some 18th-century Baroque houses still stand, best explored by foot along the medieval paths and alleyways in the area around Buda Castle. This evening, join your fellow guests for a folklore performance onboard and a traditional Hungarian dinner. Relax on the Sun Deck and enjoy the fabulous view of the city, aglow in nighttime splendor. **Meals: B, L, D**
EmeraldACTIVE: Guided hike to Buda Hill (instead of city tour)
DiscoverMORE*: Tour of Szentendre (additional expense)
DiscoverMORE*: Budapest spa experience (additional expense)
EmeraldPLUS: A traditional Hungarian folklore show
 * the DiscoverMORE’s operate simultaneously; only one can be selected.

DAY 11 Budapest / USA: Bid a fond farewell to Europe and return home with wonderful memories of life enriching experiences from your cruise along the Danube River. **Meal: B**

Itinerary is subject to change.



Exceptional Inclusions

- **21 Meals:** 9 breakfasts, 5 lunches, and 7 dinners
- **Airport transfers** on tour dates when air is provided by Mayflower Cruises & Tours
- Visit **five countries**
- Two-night **hotel stay and touring** in Prague, the Czech Republic
- **Seven-night cruise in a suite or stateroom** of your choice onboard the vessel
- **All gratuities included**
- **First-class service** by an English-speaking crew
- **Onboard Activity Manager** will support all EmeraldACTIVE excursions and host daily onboard wellness activities, games, classes and evening entertainment
- **Shore excursions** with English-speaking local guides
- Personal **listening device** for onboard excursions
- Most meals included onboard with a **variety of international cuisine**
- Complimentary **regional wines, beer and soft drinks** accompany onboard lunches and dinners
- Complimentary **bottled water** in your stateroom
- Complimentary **WiFi onboard**
- Complimentary **bicycles onboard** for use ashore
- **All port charges included**

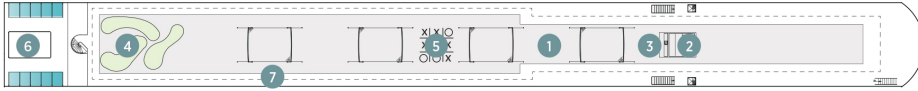
CRUISE AND HOTEL ACCOMMODATIONS

Days 2 and 3 – Hotel Jalta, or similar, Prague, Czech Republic
Days 4 through 10 – aboard an Emerald Cruises Star-Ship
 Post-cruise hotel stays available in Budapest. Call for details.

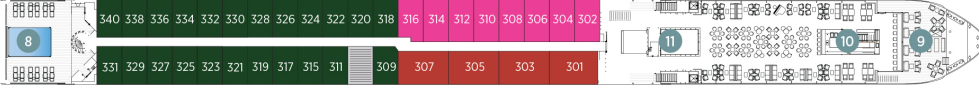
Emerald Cruises Star-Ships

Built: 2014-20 **Speed:** 15.5 mph **Staterooms:** 19 **Suites:** 72 **Length:** 443 ft. **Crew:** 47

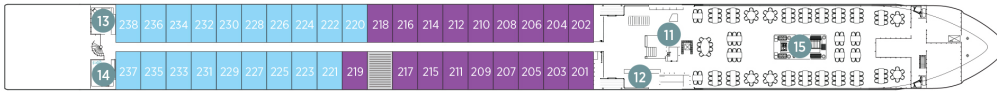
SUN DECK



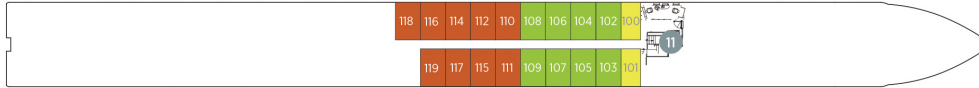
HORIZON DECK



VISTA DECK

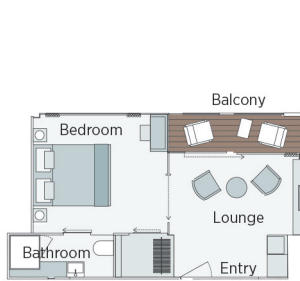


RIVIERA DECK



Public Areas and Ship Amenities

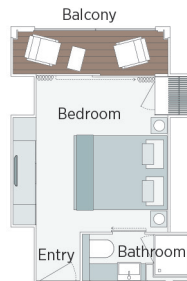
- 1 Sun Deck with Deck Chairs
- 2 Navigation Bridge
- 3 Sky Barbeque
- 4 Golf Putting Green
- 5 Games Area
- 6 Retractable Glass Roof
- 7 Walking Track
- 8 Daytime Pool / Evening Cinema
- 9 The Terrace
- 10 Horizon Bar and Lounge
- 11 Elevator
- 12 Reception
- 13 Wellness Area
- 14 Fitness Area
- 15 Reflections Restaurant



Owner's One-Bedroom Suite

315ft²

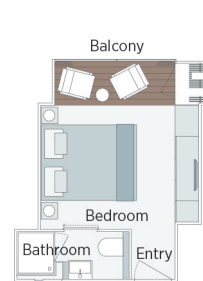
CAT SA



Grand Balcony Suite

210ft²

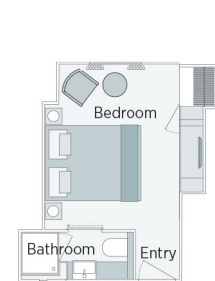
CAT S



Panorama Balcony Suite

180ft²

CAT A CAT B CAT C



Emerald Stateroom

162ft²

CAT D CAT E

Danube Explorer River Cruise

		JUNE 11, 2024		
CAT	STATEROOM / SUITE	DECK	PER PERSON TWIN	SINGLE ROOM ADD
E	Emerald Stateroom	Riviera	\$5,129	\$3,519
D	Emerald Stateroom	Riviera	\$5,185	\$3,559
C	Panorama Balcony Suite	Vista	\$5,995	\$4,129
B	Panorama Balcony Suite	Vista	\$6,049	\$4,165
A	Panorama Balcony Suite	Horizon	\$6,369	\$4,389
S	Grand Balcony Suite	Horizon	\$7,025	N/A
SA	Owner's One-Bedroom Suite	Horizon	\$7,565	N/A

Free Air from Washington Dulles airport or Philadelphia with Deposits Received by August 31, 2023, and Land / Cruise Transfers to and from the Airport from Harrisburg with 10 or more Travelers

Travelers Protection Plan (TPP) for River Cruises - \$569 per person

This nonrefundable fee will provide a refund to you during the instance that you have to cancel your trip. The cancellation has to be for a covered reason (see Plan for details on coverage) and we have to be notified at least one day prior to departure. If you must leave the tour early due to personal illness or the illness or death of an immediate family member, TPP will provide a refund for any unused services after the departure of the tour. Other benefits include medical expenses for illness and injury, emergency transportation, 24 hour hot line and lost or stolen baggage assistance. Return air transportation is included ONLY if your air tickets are purchased through Mayflower Cruises & Tours. Please review the Plan for details on coverage. Should you choose not to purchase our TPP, the following per person cancellation charges will be assessed for all tours and optional excursion costs:

- 91 days or more prior to departure: Deposit Amount
- 90 days to day of departure: 100% of total tour
- No refund on unused portions of the tour



Exclusions: Mayflower Cruises & Tours reserves the right to alter its Refund and Cancellation Policy when a substantial amount of cancellation or postponement of travel is attributable to: conditions resulting from an act of God, natural or man-made disaster, fire, government action, civil disorder, war, hostilities between nations, or unavailability of transportation through no fault of Mayflower Cruises & Tours. *Plan and benefits offered and administered by Trip Mate, Inc.*

(a) The State Employees Recreation Association, its officers, directors, representatives and members, expressly disclaims all responsibility or liability of any nature whatsoever for loss, damage or injury to property or to the person due to any cause whatsoever, occurring during or attributable to the tour, or tours, described herein and purchaser/participant by his or her subscription to or participation in the travel opportunity, does release SERA from such liability or responsibility. Without limiting the foregoing, SERA is not and shall not become liable or responsible for accidents, loss detention, annoyance, delays and expenses arising from quarantine, strikes, force majeure, failure of any means of conveyance to arrive or depart as scheduled, disturbances, government restrictions or regulations, discontinuances or change in transit or hotel accommodations and/or services and other causes over which they have no control. The passage contract in use by the airlines concerned, when issued, shall constitute the sole contract between the airlines and the purchaser and/or participants of this tour. SERA is not responsible, and the Purchaser and/or participant waives all claim against SERA for all of the aforesaid conditions as well as loss or damage resulting from delays, cancellations or substitutions of equipment, financial conditions, or any act, omission, negligence, or any other faults by the travel agent, carriers, hotel or any other transportation or service providers or companies, their agents, servants, employees and subcontractors or other causes. In the event that, in the opinion of SERA, it becomes necessary or advisable for the comfort and/or well being of the passengers, or for any reason whatsoever, to alter the itinerary of this tour, including the airline and type of equipment, accommodations and/or service utilized, SERA reserves the right to do so at its sole discretion and without notice. SERA is a non-profit organization, comprised of volunteers, for the benefit of all Commonwealth employees, active or retired, their relatives and friends. It is solely responsible for its own affairs and completely independent of the Commonwealth of Pennsylvania State Government.

(b) Assistance: Tour participants requiring assistance or accommodation for disabilities should contact the travel agency to discuss your specific requirements and what accommodation is possible.

FOR RESERVATIONS OR INFORMATION CONTACT:

Cyndi Page cypage@pa.gov
SERA

P. O. Box 796 Federal Square Station
 Harrisburg, PA 17108-0796