

FREE AIR
WHEN YOU BOOK
BY AUG 30, 2023
+SAVE \$150
PER PERSON
IF BOOKED BY
AUG 15, 2023



Tulip Time on Jewels of the Rhine

Switzerland • France • Germany • the Netherlands

Departure Date: April 10, 2024


Mayflower
CRUISES & TOURS
A DIVISION OF THE SCENIC GROUP

WAND
We Are Central Illinois

Tulip Time on Jewels of the Rhine



The historic Chapel Bridge crosses the Reuss River in Lucerne, Switzerland



Charming scenes abound in Strasbourg, France

DAY 1 Depart the USA: WAND's Meteorologist, Anthony Peoples, welcomes you aboard our private motor coach bound for Chicago. After check-in at O'Hare, we board our overnight flight to Zurich Switzerland.

DAY 2 Zurich to Lucerne, Switzerland: Upon arrival in Zurich, transfer to your hotel in Lucerne to begin your Swiss adventure. Flights should arrive by 3:00 pm. The afternoon is at leisure to begin discovering your beautiful new surroundings. This evening, join your Mayflower representative and traveling companions for an included dinner at the hotel. **Meal: D**

DAY 3 Lucerne: After breakfast, an included walking tour highlights the city's landmark, the famous 14th-century Chapel Bridge with its paintings of heroic town events, that crosses the Reuss River. See the 17th-century Renaissance Town Hall and town squares, all set amongst the beautiful backdrop of the Swiss Alps. The remainder of the day is at leisure. **Meal: B**

DAY 4 Lucerne – Basel: Before departing for your ship in Basel, the day is free to enjoy at leisure or join the morning optional excursion to Mt. Pilatus – a mountain overlooking Lucerne that offers a unique alpine experience! This afternoon, travel by motorcoach to Basel, Switzerland for embarkation of your Emerald Cruises luxury Star-Ship. This evening, join your fellow travelers for dinner onboard. **Meals: B, D**

DiscoverMORE: Mt. Pilatus (additional expense)

DAY 5 Breisach, Germany: Experience the 'tale of two cities': Breisach, Germany and Neuf-Breisach, France, divided by the Rhine. During the guided visit to these two wonderful gems on the Rhine River, you'll pass the main sights and attractions, including the UNESCO World Heritage fortress overlooking Neuf-Breisach. **Meals: B, L, D**

EmeraldPLUS: A tale of two cities divided by the Rhine

EmeraldACTIVE: Guided bike tour in Breisach

DAY 6 Strasbourg, France: Once docked in Kehl, coaches await to take you across the river to Strasbourg, the capital city of the Alsace Region in France. The guided walking tour takes you along narrow lanes and across footbridges as you discover the Grande Île, the historical city centre and UNESCO World Heritage Site. Known for its medieval black and white timber-framed buildings, picturesque le Petite France, old tanning houses, canals and river locks, the city's star attraction is the ornate cathedral, dominating the main square. This afternoon, the city is yours to explore at leisure. **Meals: B, L, D**

DiscoverMORE: Alsace Wine Route with tasting (additional expense)

DAY 7 Ludwigshafen, Germany – Schwetzingen: Relax onboard as the vessel cruises along the Rhine River to Ludwigshafen. Upon arrival travel by coach to visit Schwetzingen Palace, famous for the beauty and harmony of its gardens. Visit the interior of the palace, along with the beautiful gardens, maintained in their original design. Today they remain a cultural heritage site of European significance, and contain more than 100 sculptures scattered throughout the grounds. Alternatively, embark on an active journey to the quaint wellness town of Bad-Dürkheim for a hike through the beautiful vineyards. **Meals: B, L, D**

EmeraldACTIVE: Guided vineyard hike in Bad-Dürkheim (instead of included tour)

DAY 8 Koblenz: Begin the day sailing through the spectacular UNESCO World Heritage Rhine Gorge. Pass countless medieval castles and vineyards lining the shores of this section of the river, with photo opportunities around every bend. See the infamous Lorelei statue and Pfalzgrafenstein Castle, built on an island in the middle of the river as a medieval toll station. Continue cruising to the 2000-year-old town of Koblenz, situated at the confluence of the Rhine and Moselle Rivers. Enjoy a walking tour of Koblenz seeing the German Corner where the 2 rivers meet, the Church of Our Lady, and visit the Ehrenbreitstein Fortress by cable car on the opposite side

of the river. This fortress was part of the Prussian defense against the French in the 19th century and later used as a headquarters for the American military during WWII.

Meals: B, L, D

DiscoverMORE: Moselle & Cochem (Reichsburg) Castle Visit (additional expense)

DAY 9 Cologne: Continue cruising along the Rhine River to Cologne. Founded by the Romans, the city is one of Germany's oldest and is famous for its magnificent UNESCO World Heritage gothic cathedral. Join your local guide for an included walking tour of the city, touching on the historical charm of the Old Town and its Roman history. Traverse the quaint alleyways and see historic monuments alongside modern architecture. The tour concludes at the cathedral, whose twin spires dominate the skyline. A visit to Cologne Botanical Gardens is also included, where a local expert accompanies you through the gardens, explaining about the flora and history of the park. This evening, back onboard, join your Captain for a farewell reception and dinner. **Meals: B, L, D**

DAY 10 Amsterdam, the Netherlands: This morning, depart by coach for an included visit to the world-famous Keukenhof Gardens. Discover why it's called the "Garden of Europe" as you wander along the paths, admiring gorgeous flowers at the peak of tulip season. Unique flower shows in the pavilions along with colorful, artistic floral displays throughout the manicured garden, are sure to please! Return to the ship in the afternoon to explore the city of Amsterdam at your leisure.

Meals: B, L, D

DAY 11 Amsterdam / USA: Bid 'auf wiedersehen' to Europe and return home with memories of life enriching experiences from your European adventure and cruise along the Rhine River during tulip time. Upon our same day arrival at O'Hare, our motor coach will be waiting to return us to central Illinois.

Meal: B

Itinerary is subject to change.

CRUISE AND HOTEL ACCOMMODATIONS

Days 2 and 3 – Hotel Europe or similar, Lucerne, Switzerland

Days 4 through 10 – Aboard an Emerald Cruises Star-Ship

Post-cruise hotel stays available in Amsterdam. Call for details.



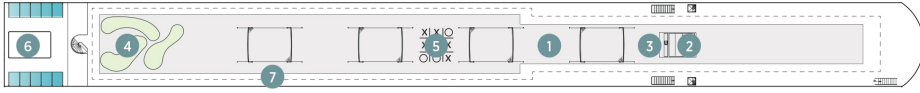
Exceptional Inclusions

- **23 Meals:** 9 breakfasts, 6 lunches and 8 dinners
- **Airport transfers** on tour dates when air is provided by Mayflower Cruises & Tours
- **Round-trip transportation** from select central Illinois locations to Chicago O'Hare
- Optional Travel Guard Vacations & Cruises **group insurance** at a cost of 7.2% of trip cost
- Visit **four countries**
- Two-night **hotel stay and touring in Lucerne**
- **Seven-nights in a suite or stateroom** of your choice onboard the vessel
- **First-class service** by an English-speaking crew
- **All gratuities included**
- Explore the magnificent **Keukenhof Gardens**
- **Shore excursions** with English-speaking local guides
- Visit **UNESCO World Heritage Sites**
- Personal **listening device** for shore excursions
- **All meals included** onboard
- Variety of **international cuisine**
- Complimentary **regional wines, beer and soft drinks** with onboard lunches and dinners
- **Onboard Activity Manager** will support all EmeraldACTIVE excursions and host daily onboard wellness activities, games, classes and evening entertainment
- Complimentary **bottled water** in your stateroom
- Complimentary **WiFi onboard**
- Complimentary **bicycles onboard** for use ashore
- **All port charges included**
- **Trip Host, Anthony Peoples of WAND TV**

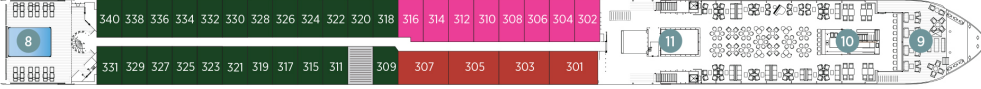
Emerald Cruises Star-Ships

Built: 2014-20 **Speed:** 15.5 mph **Staterooms:** 19 **Suites:** 72 **Length:** 443 ft. **Crew:** 47

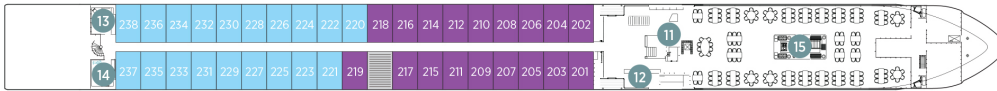
SUN DECK



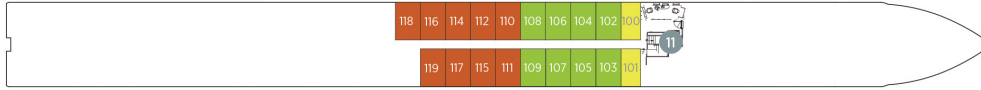
HORIZON DECK



VISTA DECK

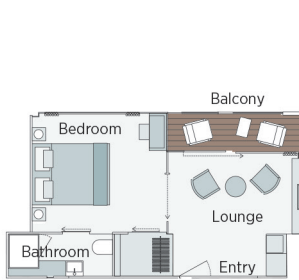


RIVIERA DECK



Public Areas and Ship Amenities

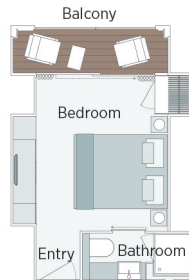
- 1 Sun Deck with Deck Chairs
- 2 Navigation Bridge
- 3 Sky Barbeque
- 4 Golf Putting Green
- 5 Games Area
- 6 Retractable Glass Roof
- 7 Walking Track
- 8 Daytime Pool / Evening Cinema
- 9 The Terrace
- 10 Horizon Bar and Lounge
- 11 Elevator
- 12 Reception
- 13 Wellness Area
- 14 Fitness Area
- 15 Reflections Restaurant



Owner's One-Bedroom Suite

315ft²

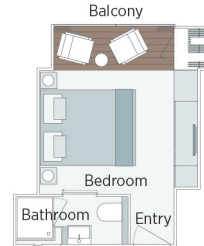
CAT SA



Grand Balcony Suite

210ft²

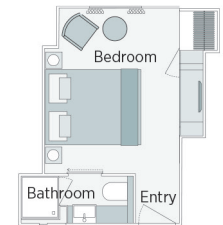
CAT S



Panorama Balcony Suite

180ft²

CAT A CAT B CAT C



Emerald Stateroom

162ft²

CAT D CAT E

Tulip Time on Jewels of the Rhine River Cruise

CAT	STATEROOM / SUITE	DECK	APRIL 10, 2024	
			PER PERSON TWIN	SINGLE ROOM ADD
E	Emerald Stateroom	Riviera	\$5,368	\$3,369
D	Emerald Stateroom	Riviera	\$5,506	\$3,445
C	Panorama Balcony Suite	Vista	\$6,163	\$3,859
B	Panorama Balcony Suite	Vista	\$6,451	\$4,055
A	Panorama Balcony Suite	Horizon	\$6,730	\$4,245
S	Grand Balcony Suite	Horizon	\$7,141	NA
SA	Owner's One-Bedroom Suite	Horizon	\$7,930	NA

A passport valid through October 20, 2024 is required.

Air itineraries may not be available until documents are received. Air seats are assigned by the airline for the entire group. Seat changes can only be attempted upon receipt of tickets and documents at which time availability may be limited. If specific seat assignments are vital to your reservation, we recommend individual air reservations rather than booking air with the group.

Pricing Includes:

- ✦ Roundtrip Air from Chicago O'Hare Airport
- ✦ Roundtrip transfers between select central Illinois locations to O'Hare Airport

Deposit of \$1,600/person to reserve your room



FOR RESERVATIONS OR INFORMATION CONTACT:

Tour Group Planners
Amy or Becky 217-422-5002
 becky@tourgroupplanners.com

