

**FREE  
AIRFARE**  
CALL FOR DETAILS



# Jewels of the Rhine

Switzerland • France • Germany • the Netherlands

Departure Date: June 5, 2024



# Jewels of the Rhine



Lucerne, Switzerland – set amongst a backdrop of the Alps



Strasbourg, France proudly boasts diverse architecture

**DAY 1 Depart the USA:** Depart the USA on your overnight flight to Zurich, Switzerland.

**DAY 2 Zurich to Lucerne, Switzerland:** Upon arrival in Zurich, transfer to your hotel in Lucerne to begin your Swiss adventure. Flights should arrive by 3:00pm. The afternoon is at leisure to begin discovering your beautiful new surroundings. This evening, join your Mayflower representative and traveling companions for an included dinner at the hotel. **Meal: D**

**DAY 3 Lucerne:** After breakfast, an included walking tour highlights the city's landmark, the famous 14th-century Chapel Bridge with its paintings of heroic town events, that crosses the Reuss River. See the 17th-century Renaissance Town Hall and town squares, all set amongst the beautiful backdrop of the Swiss Alps. The remainder of the day is at leisure. **Meal: B**

**DAY 4 Lucerne – Basel:** Before departing for your ship in Basel, the day is free to enjoy at leisure or join the morning optional excursion to Mt. Pilatus – a mountain overlooking Lucerne that offers a unique alpine experience! This afternoon, travel by motorcoach to Basel, Switzerland for embarkation of your luxurious Emerald Cruises Star-Ship. This evening, join your fellow travelers for dinner onboard. **Meals: B, D**  
**DiscoverMORE:** Mt. Pilatus (additional expense)

**DAY 5 Breisach, Germany:** As part of the EmeraldPLUS program, visit the city of Freiburg. Considered the 'capital of the Black Forest', Freiburg has lovely sights that will leave you amazed. You also have the opportunity to sample true Black Forest delicacies from the lively market in the city center near the main cathedral. If you're feeling more active, join the guided bike tour in Breisach. **Meals: B, L, D**  
**EmeraldPLUS:** Guided tour of Freiburg  
**EmeraldACTIVE:** Bike tour in Breisach

**DAY 6 Strasbourg, France:** Once docked in Kehl, coaches await to take you across the river to Strasbourg, the capital city of the Alsace Region in France. The guided walking tour takes you along narrow lanes and across footbridges as you discover the Grande Île, the historical city center and UNESCO World Heritage Site. Known for its medieval black and white timber-framed buildings, picturesque le Petite France, old tanning houses, canals and river locks, the city's star attraction is the ornate cathedral, dominating the main square. This afternoon, the city is yours to explore at leisure. **Meals: B, L, D**  
**DiscoverMORE:** Alsace Wine Route with tasting (additional expense)

**DAY 7 Ludwigshafen / Heidelberg, Germany:** Relax onboard as the vessel cruises along the Rhine River to Ludwigshafen, docking site for Heidelberg. Travel by coach to Heidelberg, home of the oldest university in Germany. The guided walking tour visits the ruins of Heidelberg Castle, with fantastic views overlooking the Neckar River, and takes you through the cobblestoned-streets of the medieval city below. Alternatively, hike from Mount Königstuhl to Heidelberg. **Meals: B, L, D**  
**EmeraldACTIVE:** Hike from Mount Königstuhl to Heidelberg

**DAY 8 Koblenz:** Begin the day sailing through the spectacular UNESCO World Heritage Rhine Gorge. Pass countless medieval castles and vineyards lining the shores of this section of the river, with photo opportunities around every bend. See the infamous Lorelei statue and Pfalzgrafenstein Castle, built on an island in the middle of the river as a medieval toll station. Continue cruising to the 2000-year-old town of Koblenz, situated at the confluence of the Rhine and Moselle Rivers. Enjoy a walking tour through the streets of the city as your guide points out historic monuments and buildings. See the 'German Corner' monument marking the confluence of the Rhine and Moselle Rivers.



Relax during a glass-top canal cruise through Amsterdam

Panoramic views await from the visit to Ehrenbreitstein Fortress, reached by cable car, crossing the river! **Meals: B, L, D**  
**DiscoverMORE:** Moselle & Cochem (Reichsburg) Castle Visit (additional expense)

**DAY 9 Cologne:** Continue cruising along the Rhine River to Cologne. Founded by the Romans, the city is one of Germany's oldest and is famous for its magnificent UNESCO World Heritage gothic cathedral. Join your local guide for an included walking tour of the city, touching on the historical charm of the Old Town and its Roman history. Traverse the quaint alleyways and see historic monuments alongside modern architecture. After the tour, visit a one-of-a-kind farm estate on the outskirts of Cologne, which provides the locals with sustainable products. Enjoy a cooking demonstration of Reibekuchen (potato pancakes) and have a glimpse behind the scenes of the estate. This evening, back onboard, join your Captain for a farewell reception and dinner. **Meals: B, L, D**  
**EmeraldPLUS:** Visit to a local farm estate with cooking demonstration

**DAY 10 Amsterdam, the Netherlands:** Welcome to Amsterdam, the final port of call. Experience the city on a cruise aboard a glass-top boat. Traverse the UNESCO World Heritage network of canals, passing Roman patrician and ornate merchant houses from the Dutch Golden Age. Alternatively, join a guided bike tour to Waterland, passing through quintessential Dutch landscapes of quaint villages and windmills. **Meals: B, L, D**  
**EmeraldACTIVE:** Guided bike tour to Waterland

**DAY 11 Amsterdam / USA:** Bid 'auf wiedersehen' to Europe and return home with memories of life-enriching experiences from your European adventure and cruise along the Rhine River. **Meal: B**  
 Itinerary is subject to change.



## Exceptional Inclusions

- **23 Meals:** 9 breakfasts, 6 lunches and 8 dinners
- **Airport transfers** on tour dates when air is provided by Mayflower Cruises & Tours
- Visit **four countries**
- Two-night **hotel stay and touring in Lucerne**
- **Seven-nights in a suite or stateroom** of your choice onboard the vessel
- **First-class service** by an English-speaking crew
- **Onboard Activity Manager** will support all EmeraldACTIVE excursions and host daily onboard wellness activities, games, classes and evening entertainment
- **All gratuities included**
- **Shore excursions** with English-speaking local guides
- Personal **listening device** for shore excursions
- Visit **UNESCO World Heritage Sites**
- **All meals included** onboard with a variety of **international cuisine**
- Complimentary **regional wines, beer and soft drinks** with onboard lunches and dinners
- Complimentary **bottled water** in your stateroom
- Complimentary **WiFi onboard**
- Complimentary **bicycles onboard** for use ashore
- **All port charges included**

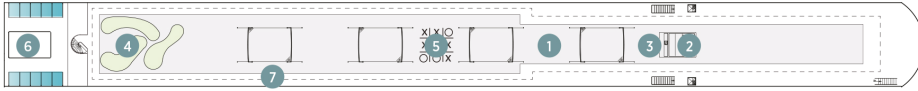
## CRUISE AND HOTEL ACCOMMODATIONS

**Days 2 and 3** – Hotel Europe or similar, Lucerne, Switzerland  
**Days 4 through 10** – Aboard an Emerald Cruises Star-Ship  
 Post-cruise hotel stays available in Amsterdam. Call for details.

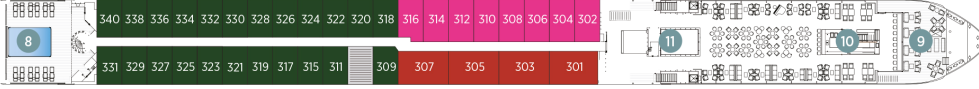
# Emerald Cruises Star-Ships

**Built:** 2014-20 **Speed:** 15.5 mph **Staterooms:** 19 **Suites:** 72 **Length:** 443 ft. **Crew:** 47

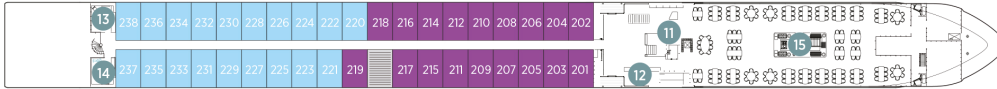
## SUN DECK



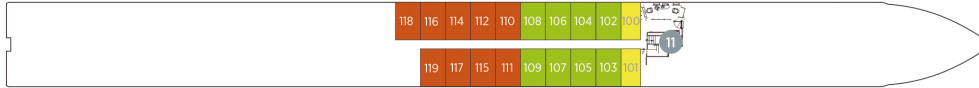
## HORIZON DECK



## VISTA DECK

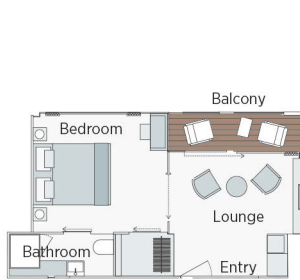


## RIVIERA DECK



## Public Areas and Ship Amenities

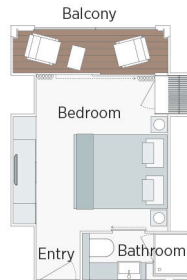
- 1 Sun Deck with Deck Chairs
- 2 Navigation Bridge
- 3 Sky Barbeque
- 4 Golf Putting Green
- 5 Games Area
- 6 Retractable Glass Roof
- 7 Walking Track
- 8 Daytime Pool / Evening Cinema
- 9 The Terrace
- 10 Horizon Bar and Lounge
- 11 Elevator
- 12 Reception
- 13 Wellness Area
- 14 Fitness Area
- 15 Reflections Restaurant



**Owner's One-Bedroom Suite**

315ft<sup>2</sup>

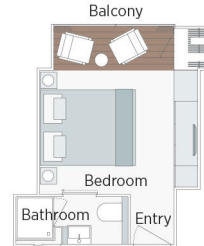
**CAT SA**



**Grand Balcony Suite**

210ft<sup>2</sup>

**CAT S**



**Panorama Balcony Suite**

180ft<sup>2</sup>

**CAT A CAT B CAT C**



**Emerald Stateroom**

162ft<sup>2</sup>

**CAT D CAT E**

2024 Departure Date  
**Jewels of the Rhine**

		JUN 5	
CAT	STATEROOM / SUITE	DECK	
E	Emerald Stateroom	Riviera	PER PERSON TWIN: \$4,865   SINGLE ROOM ADD: + \$3,369
D	Emerald Stateroom	Riviera	PER PERSON TWIN: \$4,969   SINGLE ROOM ADD: + \$3,445
C	Panorama Balcony Suite	Vista	PER PERSON TWIN: \$5,565   SINGLE ROOM ADD: + \$3,859
B	Panorama Balcony Suite	Vista	PER PERSON TWIN: \$5,845   SINGLE ROOM ADD: + \$4,055
A	Panorama Balcony Suite	Horizon	PER PERSON TWIN: \$6,115   SINGLE ROOM ADD: + \$4,245
S	Grand Balcony Suite	Horizon	PER PERSON TWIN: \$6,539   SINGLE ROOM ADD: N/A
SA	Owner's One-Bedroom Suite	Horizon	PER PERSON TWIN: \$7,405   SINGLE ROOM ADD: N/A

**Pricing includes Free roundtrip airfare from St. Louis, MO when booked by June 30, 2023, port charges, staff gratuities and local roundtrip airport transfers in St. Louis (minimum of 10 travelers).**

Call for airfare rates after June 30, 2023.

*Air itineraries may not be available until documents are received. Air seats are assigned by the airline for the entire group. Seat changes can only be attempted upon receipt of tickets and documents at which time availability may be limited. If specific seat assignments are vital to your reservation, we recommend individual air reservations rather than booking air with the group.*

### Travelers Protection Plan (TPP) for River Cruises:

- \$499 per person, cabin priced at \$5,000 or less
- \$569 per person for cabins priced \$5,001 and above

This nonrefundable fee will provide a refund to you during the instance that you have to cancel your trip. The cancellation has to be for a covered reason (see Plan for details on coverage) and we have to be notified at least one day prior to departure. If you must leave the tour early due to personal illness or the illness or death of an immediate family member, TPP will provide a refund for any unused services after the departure of the tour. Other benefits include medical expenses for illness and injury, emergency transportation, 24 hour hot line and lost or stolen baggage assistance. Return air transportation is included ONLY if your air tickets are purchased through Mayflower Cruises & Tours. Please review the Plan for details on coverage. Should you choose not to purchase our TPP, the following per person cancellation charges will be assessed for all tours and optional excursion costs:

- 91 days or more prior to departure: Deposit Amount
- 90 days to day of departure: 100% of total tour
- No refund on unused portions of the tour



**Exclusions:** Mayflower Cruises & Tours reserves the right to alter its Refund and Cancellation Policy when a substantial amount of cancellation or postponement of travel is attributable to: conditions resulting from an act of God, natural or man-made disaster, fire, government action, civil disorder, war, hostilities between nations, or unavailability of transportation through no fault of Mayflower Cruises & Tours. Plan and benefits offered and administered by Trip Mate, Inc.

FOR RESERVATIONS OR INFORMATION CONTACT:



**618-526-2201**  
**info@dtoursandtravel.com**

